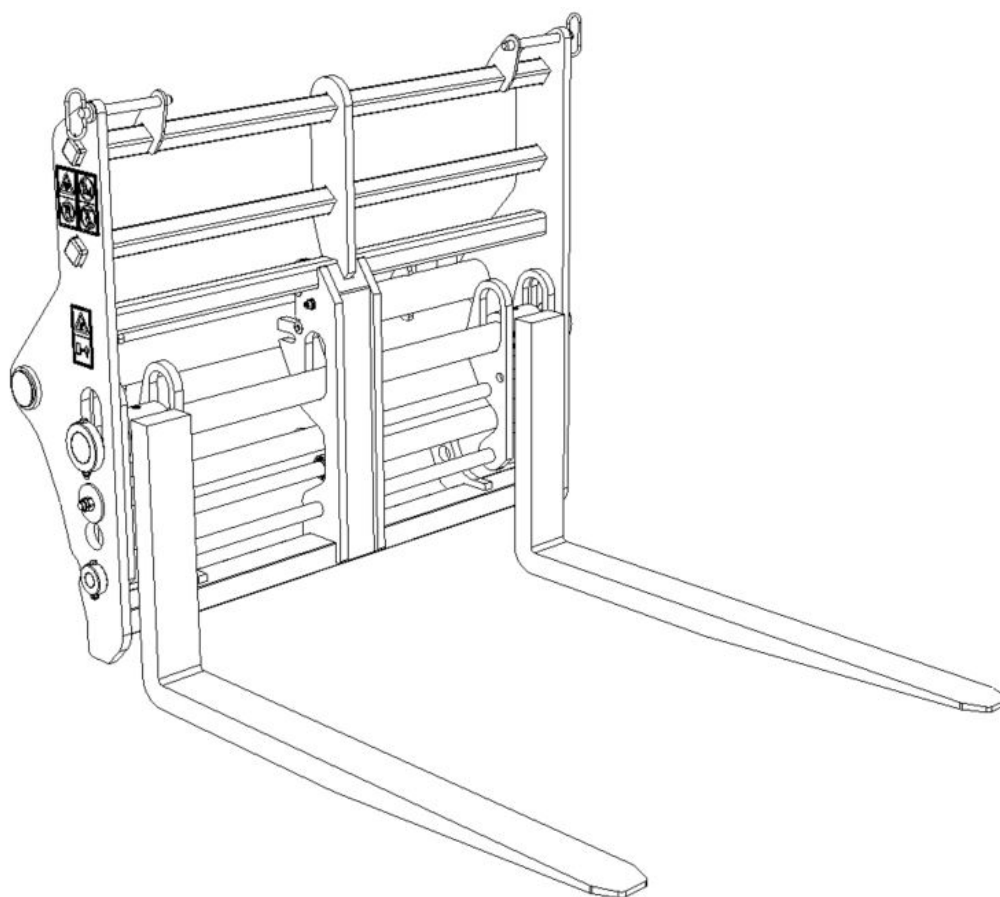




## OPERATORS MANUAL

**ATTACHMENT:- DOUBLE FORK POSITIONER - DFP**

**SERIAL NUMBER.....**



**WHITES MATERIAL HANDLING Ltd.  
17-19 EMERY ROAD  
BRISLINGTON,  
BRISTOL. BS4 5PF. U.K.  
TEL. +44(0) 117 972 0006**

<http://www.whitesmh.co.uk>

**PART NUMBER:- WHCE0204**

# OPERATORS MANUAL

## FOREWORD

In these Safety and Operating Instructions the following words are defined as follows:-

**'ATTACHMENT'**:- A bucket or attachment which is classed as a machine under the CE machinery Directive.

**'MACHINE'** or **'HOST MACHINE'**:- A wheeled or tracked loading machine (skid steer, backhoe loader, articulated loader) which connects to and powers the attachment.



## WARNING

**INCORRECT USE OF THIS ATTACHMENT OR FAILURE TO FOLLOW INSTRUCTIONS CONCERNING SAFETY CAN LEAD TO SERIOUS INJURY OR DEATH.**

**BEFORE USING THIS ATTACHMENT:-**

- 1. READ THIS MANUAL CAREFULLY.**
- 2. MAKE SURE THAT THIS ATTACHMENT IS SUITABLE FOR USE ON THE HOST MACHINE.**
- 3. CLEAR THE AREA OF OTHER PERSONS.**
- 4. LEARN AND PRACTICE SAFE USE OF THIS ATTACHMENT AND HOST MACHINE IN A CLEAR AREA BEFORE YOU OPERATE THIS MACHINE ON A JOB SITE.**
- 5. IT IS YOUR RESPONSIBILITY TO OBSERVE PERTINENT LAWS AND REGULATIONS IN RESPECT OF THE OPERATION OF THIS ATTACHMENT AND THE HOST MACHINE.**

## TO THE OWNER

You are the owner of an attachment that has been built to operate correctly on your host machine.

The attachment conforms to current safety regulations (see OFFICIAL JUSTIFYING DOCUMENTS on the following page).

However, this does not exclude all risk of accidents, which is why it is essential to observe elementary safety rules and precautions.

Before putting this attachment into service please ensure that:-

1. The operator has read and fully understands this operator's manual.
2. The operator has received necessary training on the functions and capabilities of this attachment.
3. The information on the identification plate, which is fixed to the attachment, matches the information on the Declaration of Conformity.

# OFFICIAL JUSTIFYING DOCUMENTS

## DECLARATION OF CONFORMITY



**WHITES**

Buckets and Attachments for all types of Loading Machines

Whites Material Handling Ltd  
17-19 Emery Road  
Brislington Trading Estate  
Bristol BS4 5PF, United Kingdom  
Telephone: +44 (0)117 9720006  
Fax: +44 (0)117 9723296  
Email: sales@whitesmh.co.uk  
Internet: www.whitesmh.co.uk

<b>UKCA</b>	<b>CE</b>
-------------	-----------


### DECLARATION OF CONFORMITY

DATE OF MANUFACTURE:	CERTIFICATE/SERIAL NO.
26/11/2021	W0257550-1

DESCRIPTION	
WHITES PART NUMBER	BB576/WHI
CUSTOMER PART NUMBER/ DESCRIPTION	BUCKET BUSH SWEET (2290mm (7'6"))
TO FIT MACHINE	
WEIGHT -kg	2.2

EXAMPLE

We, WHITES MATERIAL HANDLING LTD., declare under our sole responsibility that the product detailed above corresponds to the relevant basic safety and health requirements of the Directive 2006/42/EC and that the following standards and/or technical specifications have been respected - BS EN474-1:2006 +A4:2013


FOR AND ON BEHALF OF WHITES MATERIAL HANDLING LTD  
  
MARTIN COLES, Project Engineer

-SAFETY (automatically certified as per 89/392/EEC.)


Attachment	<input type="text"/>	Serial Number	<input type="text"/>
Part Number	<input type="text"/>	Date of Manufacture	<input type="text"/>
S.W.L. (pallet fork attachment) [Kg]	<input type="text"/>	Max Hyd Pressure [Bar]	<input type="text"/>
MASS (WEIGHT) [Kg]	<input type="text"/>	Capacity [m <sup>3</sup> ]	<input type="text"/>
To fit Machine	<input type="text"/>	Model	<input type="text"/>

**UK  
CA**

Manufacturer / Supplier:  
Bristol, BS4 5PF, UK



Tel. +44 (0) 117 972 0006  
sales@whitesmh.co.uk



WH-CE-0208

ATTACHMENT IDENTIFICATION PLATE:- Part No. WH-CE-0085

# **LOADER MOUNTED ATTACHMENTS**

- 1. SAFETY**
- 2. OPERATING INSTRUCTIONS**
- 3. MAINTENANCE**
- 4. SUPPLEMENTARY INSTRUCTIONS**

## **1. SAFETY**

**1.1 GENERAL:** This attachment has been designed and built according to the state of the art and meets current safety regulations in force. However, this does not completely exclude the risk of accidents. It is therefore essential to follow basic safety rules and precautions.

The strict execution of the instructions provided in this manual will prevent accidents during attachment use and maintenance operations.

These instructions will only be effective if the attachment receives proper maintenance. Any defects or anomalies must be repaired immediately.

Only use this attachment for the purpose for which it was designed.

**1.2 BEFORE YOU OPERATE THE ATTACHMENT:** Please be aware that this attachment is designed to be used in conjunction with the host machine. It is essential, therefore, to be fully conversant with the correct operating procedures and safety instructions of the machine. Familiarise yourself with the attachment, and the loads to be carried.

Always follow the machine manufacturers' instructions in relation to connection, disconnection and operation of attachments.

**1.3 MAINTENANCE:**

### **! BEFORE CARRYING OUT ANY SERVICE WORK ON THE ATTACHMENT:**

- ***Park the host machine on a hard level surface.***
- ***Lower the attachment to the ground.***
- ***Apply the parking brake and shut down the engine.***
- ***Block the machine to prevent any movement.***

When servicing the attachment, place a 'DO NOT START UP' label on the control panel of the machine.

Modifying the attachment without prior permission can cause serious injury. Do not undertake any modification without prior authorisation from White's or their Approved Agent.

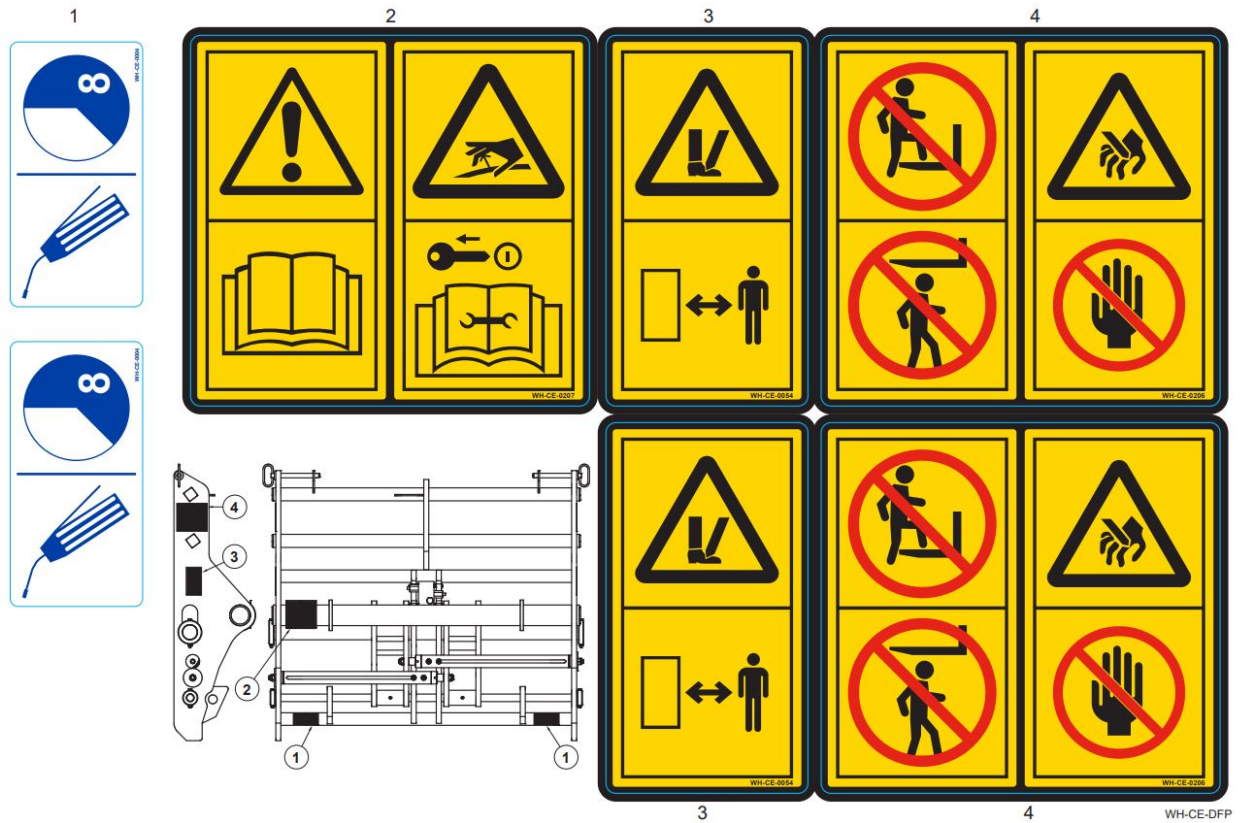
Always wear eye protection when using a tool that may project metal particles. Use a hammer with a soft face, such as copper, for installing pins.

Pressurised hydraulic fluid or grease, which penetrates the skin can cause serious injury. Take the necessary safety precautions (safety clothing and protection for the face and hands) to avoid such risks. Also, before using these products, read the manufacturer's instructions for their use. If hydraulic fluid penetrates the skin, call a doctor immediately.

**1.4 FAILURE DURING OPERATION:** If an attachment failure occurs during operation, disconnect the attachment from the host machine and take measures against its' use until a satisfactory repair has been carried out.

### 1.5 SAFETY DECALS:

**! An illegible or missing decal may have serious consequences.  
Replace safety decals that are missing or damaged.**



WARNING DECALS:- Part No. WH-CE-DFP

## 2. OPERATING INSTRUCTIONS

### 2.1. INSPECTION:

UPON DELIVERY:- Check for transit damage.  
Check hydraulic system for any damage or leaks.

DAILY INSPECTIONS:- Check for weld and/or structural failure.  
Check for insecure bolts, nuts and pins.  
Check for missing parts.  
Check for hydraulic leaks.  
Check for wear on sliding mechanism.

MONTHLY INSPECTIONS:- Check for excessive wear on all contact parts. Replace with genuine spares when necessary.

**2.2 APPLICATION:** For the moving and lifting of Palletised loads and stillages ONLY. Do NOT use as a lifting device or work platform without the correct attachment securely connected.

For all earth moving, and load handling operations refer to the machine manufacturer's handbook for correct use of machine and its' controls.

Ensure that the attachment is suitable for the work in hand. e.g. check that the capacity of the attachment is matched to the density and weight of the load.

**Always carry the load low!**

**2.3. SITE FAMILIARITY:** Before operating the machine and attachment on a new site, check and locate any holes, obstacles, and debris that could be in the machine area, Locate any unavoidable 'danger areas' (electric power lines, bridges, tight corners, etc.) and make sure you can work safely in these areas.

Electric power lines, gas pipes, water pipes or other underground installations can cause injury or death. Find out about the location of underground installations before you operate the attachment in a new area.

Be aware of people in the vicinity of the attachment. Send away those whose presence is not required.

### 2.4. NORMAL USE:

**! Hillside operation can be dangerous. Rain, snow, loose gravel or soft ground change working conditions. Before you work on a hillside, make sure the attachment can be operated safely.**

This attachment is designed to operate with the host machine under normal working conditions. Care should be taken if weather or site conditions become difficult.

Operate the attachment carefully and smoothly in poor weather and on uneven sites.

**2.5. OTHER USES:** This attachment is designed for a specific application. Do not carry out different applications with this attachment before first checking with Whites or their Agent.

**2.6. HANDLING AND TRANSPORTATION:** Buckets and attachments can become unstable when not connected to their host machine. Great care should be taken when handling or transporting buckets and attachments. Personnel should be made aware of the risk of injury if due care is not taken. When transporting, always ensure that the attachments are securely strapped or roped to the carrying vehicle.

## 3. MAINTENANCE

**! Never attempt to service a hydraulic circuit component without having first made sure it is no longer under pressure. To do this, carefully read the following instructions.**

**3.1. GENERAL INSTRUCTIONS:** Attachments which operate with hydraulic power are supplied through the auxiliary hydraulic system of the host machine. Connection to the auxiliary hydraulic circuit is by means of quick release couplers.

To connect or disconnect the quick couplers the operator must relieve the hydraulic pressure in the host machine. To relieve pressure, please see machine manufacturer's instruction manual.

Regularly check the attachment for signs of damage or wear. Repair or replace damaged components immediately.

If welding repairs are necessary, please observe the following points:-

1. Remove attachment from host machine.
2. Always employ a competent and fully qualified welder to carry out the repair.

When ordering replacement parts always quote the part number and attachment serial number.

**3.2. LUBRICATION:** DAILY OR EVERY 8 HOURS OPERATION:- Grease all moving parts with Molydisulphide Grease, including, but not limited to hinge points, hydraulic cylinder swivel points, wheels and bearings.

**3.3 GROUND ENGAGING COMPONENTS:** Excessive wear to ground engaging parts will lead to reduced performance. Replacing these parts when necessary will increase performance, and reduce wear and tear to the host machine.

**3.4. HYDRAULIC COMPONENTS:** Check for damage or leaking of hydraulic components, fittings and hoses.

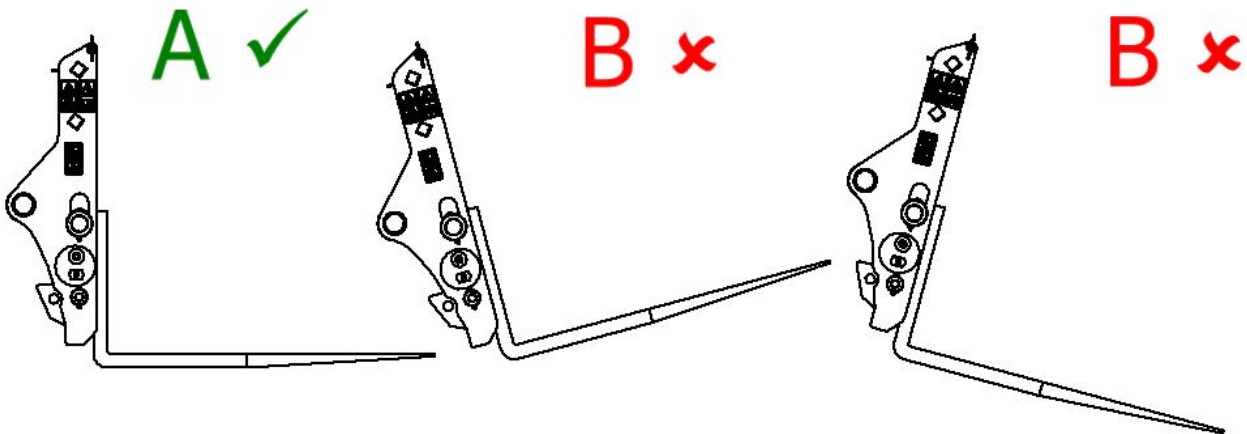
## 4. SUPPLEMENTARY INSTRUCTIONS FOR THE OPERATION OF SPECIFIC ATTACHMENTS

### SAFETY

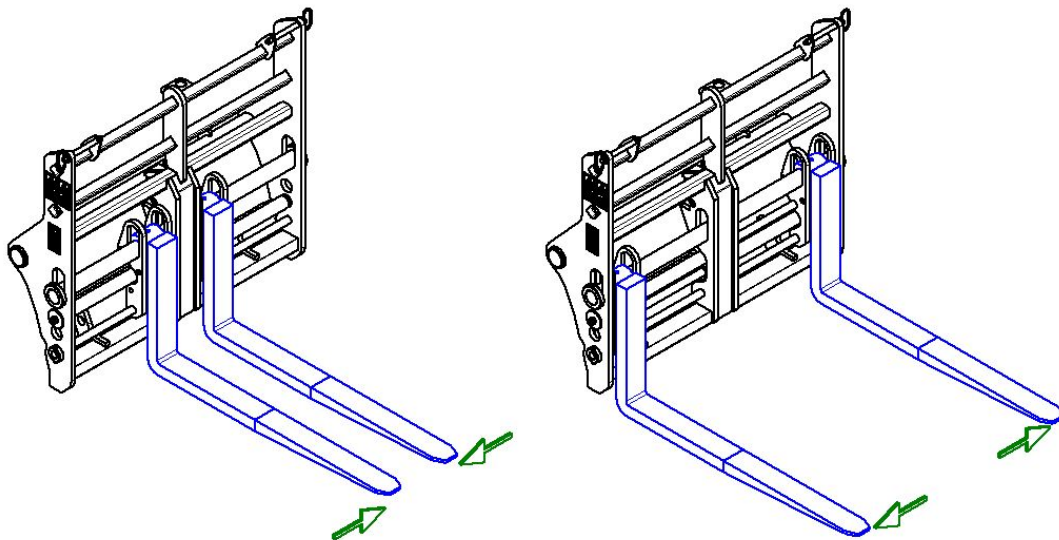
- 1) It is essential that before operating this attachment the operator is fully capable of safely operating the host machine.
- 2) The operator should ensure that no other persons are present in the working area.
- 3) The operator should ensure that the attachment is the correct unit for the host machine by checking the attachment identification plate which is attached to the rear of the attachment.
- 4) Attach the interface plate to the host machine in accordance with the operator's instructions.
- 5) Connection of the hydraulic hoses should be carried out as per the instructions in the host machines manual.

### OPERATION

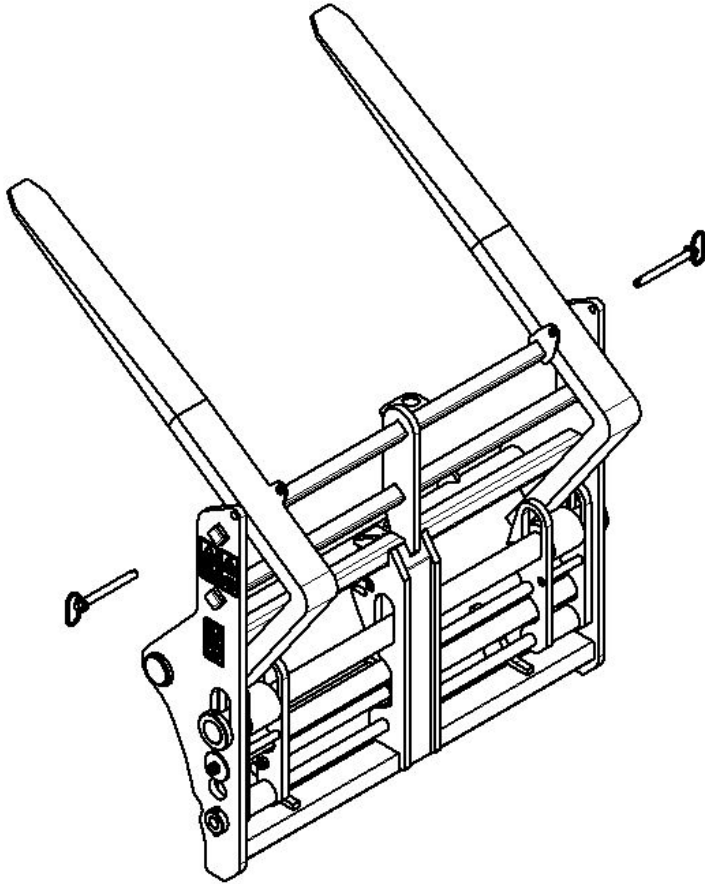
- 1) When picking up, and setting loads down, the forks should operate in a level plane.



- 2) Operate the auxiliary hydraulic controls to slide the forks closer or farther apart to the desired spacing.

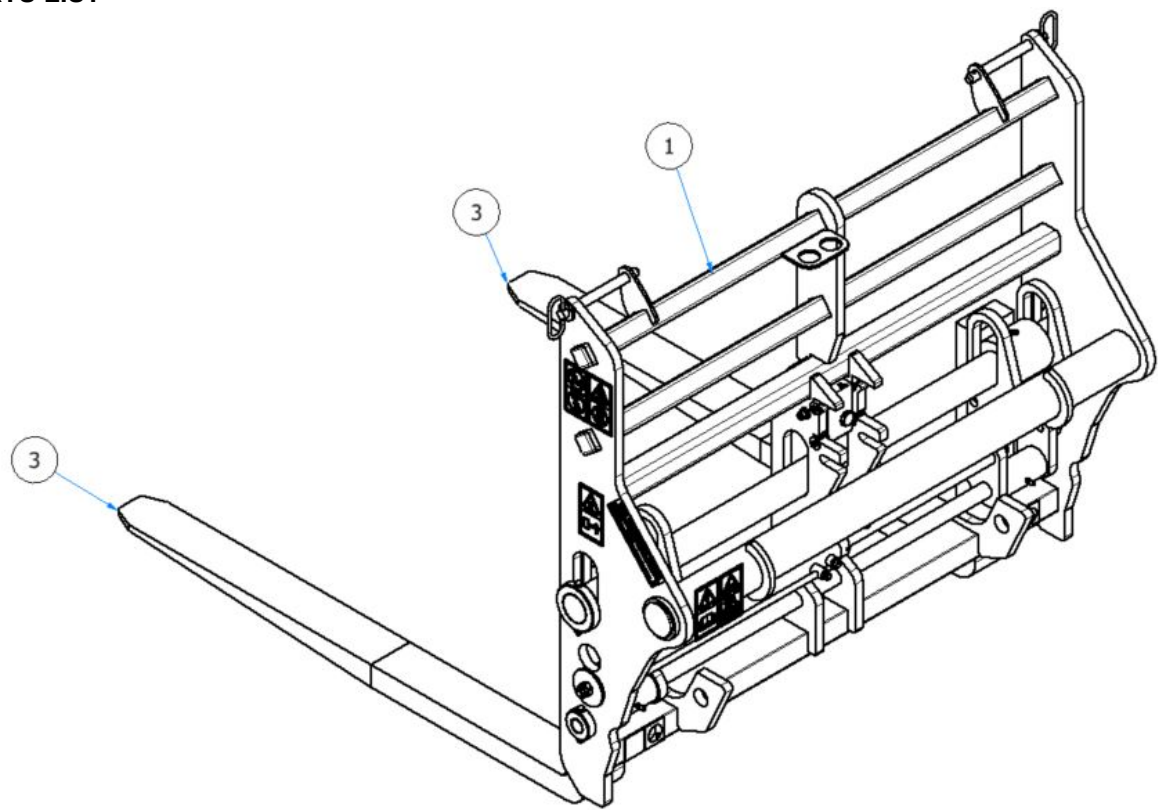


- 3) To store forks in the fork parking positions, removed pin, rotate fork as far as it will go, return pin & secure lynch pin.



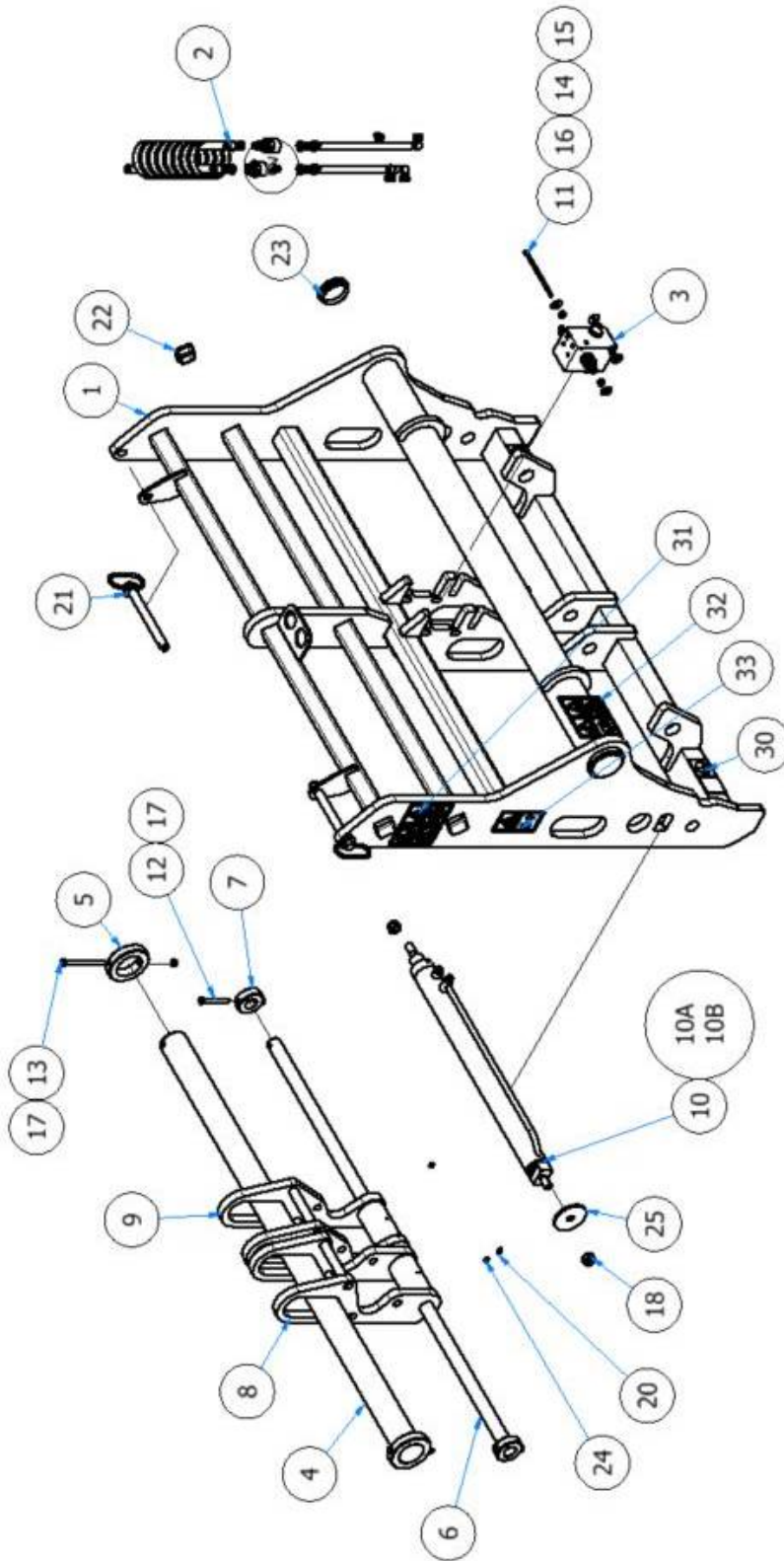


PARTS LIST



ITEM	QTY	PART NUMBER	DESCRIPTION
1	1	788457-01	.FW2 DBL FORK POSITIONER - (SWL 4500 Kg)
3	2	719611-NT	FORK 1200MM - 60MM BOSS 2350KG@500MM - NO "T" PIECE

# ASSEMBLY :- 788457



ITEM	QTY	PART NUMBER	DESCRIPTION	ITEM	QTY	PART NUMBER	DESCRIPTION	ITEM	QTY	PART NUMBER	DESCRIPTION
1	1	788457WA	FORK POSITIONER WA	11	2	ZB060130	M6 ZINC BOLT 130MM	22	4	WHM14266	PLASTIC RECT INSERT 40X40X4
2	1	788457HK-V2	HOSE KIT - 788457	12	2	ZB080070	M8 ZINC BOLT 70MM	23	2	WHM14270	INSERT RT1465 - 70MM
3	1	78845709-01	FLOW DIVIDER	13	2	ZB080110	M8 ZINC BOLT 110MM	24	2	WHM14374	GREASE NIPPLE COVER - RED
4	1	WHBP0428	FORK BAR - 788457 - 52000273	14	4	ZM060025	M6X25 MUDWING WASHER Z/P BRT	25	2	WHM14779	CYLINDER RETAINING WASHER ZINC
5	2	WHBP0430	LOCKING COLLAR - FORK BAR	15	4	ZN080000	M8 ZINC FULL NUT GR8.8				70MM OD - 17MM ID X 5MM
6	1	WHBP0429	LOWER PIN - 788457 - 52000273	16	2	ZY060000	M6 NYLOC NUT ZINC	30	2	WHCE0004	GREASE LABEL - 8 HOURS
7	2	WHBP0431	LOCKING COLLAR - LOWER PIN	17	4	ZY080000	M8 NYLOC ZINC NUT GR8.8	31	2	WHCE0206	DECAL IS WH-CE-0052 & WH-CE-0116 COMBINED
8	1	78845705	FORK MOUNT - RHS	18	4	ZY160000	M16 NYLOC ZINC NUT P DIN982				
9	1	78845706	FORK MOUNT - LHS	20	2	WHM14025	GREASE NIPPLE - M6	32	1	WHCE0207	DECAL READ OPERATORS MANUAL & HYDRAULIC WARNING
10	2	CW000049-V1	HYDRAULIC CYLINDER 78845707/S	21	2	WHM14265	CLIP ASSEMBLY	33	2	WHCE0054	CRUSHING OF FEET
								41	1	264144	COUPLER FF (F) MANITOU - 10FFSS24
								42	1	281749	COUPLER FF (F) MANITOU - 10FFSS26
								10A	1	CK-CC-0049	SEAL KIT - BLUE SEAL - ROD = 30MM
								10B	1	CK-00-0049	SEAL KIT - BLACK SEAL - ROD = 25.4MM