

WHITES

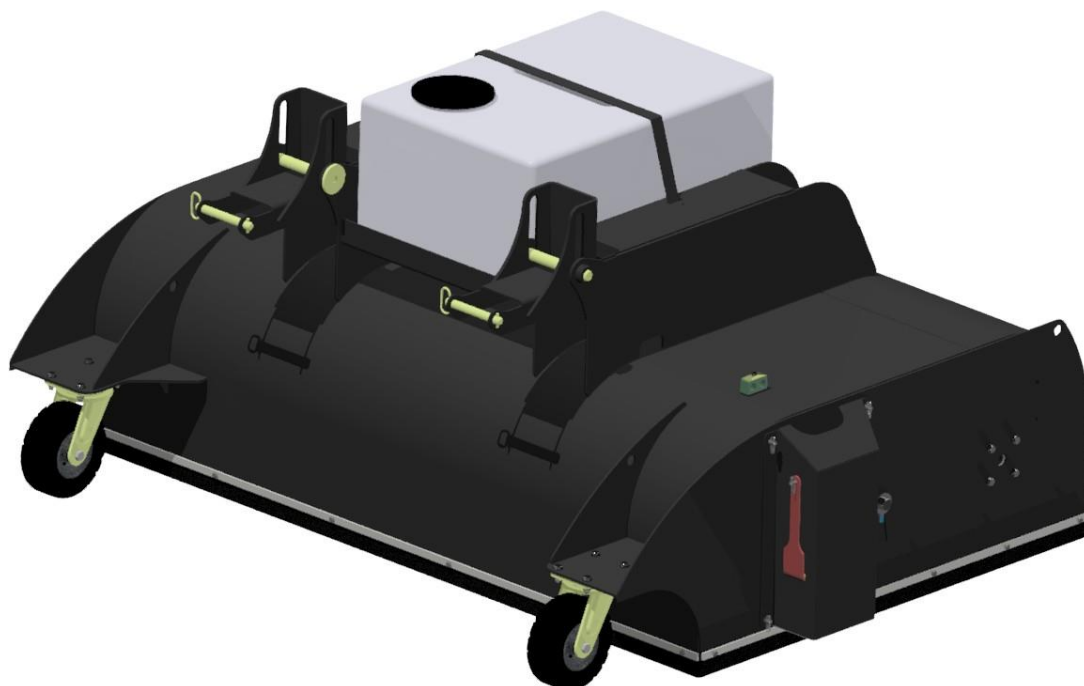
Tel +44 (0) 117 9720006

www.whitesmh.co.uk

OPERATORS MANUAL

ATTACHMENT:- SWEEPER COLLECTOR

SERIAL NUMBER.....



**WHITES MATERIAL HANDLING Ltd.
17-19 EMERY ROAD
BRISLINGTON,
BRISTOL. BS4 5PF. U.K.
TEL. +44(0) 117 972 0006
<http://www.whitesmh.co.uk>**

PART NUMBER:- WHCE0198

OPERATORS MANUAL

FOREWORD

In these Safety and Operating Instructions the following words are defined as follows:-

'ATTACHMENT':- A bucket or attachment which is classed as a machine under the CE machinery Directive.

'MACHINE' or **'HOST MACHINE'**:- A Telescopic loader, loading machine.



WARNING

INCORRECT USE OF THIS ATTACHMENT OR FAILURE TO FOLLOW INSTRUCTIONS CONCERNING SAFETY CAN LEAD TO SERIOUS INJURY OR DEATH.

BEFORE USING THIS ATTACHMENT:-

- 1. READ THIS MANUAL CAREFULLY.**
- 2. MAKE SURE THAT THIS ATTACHMENT IS SUITABLE FOR USE ON THE HOST MACHINE.**
- 3. CLEAR THE AREA OF OTHER PERSONS.**
- 4. LEARN AND PRACTICE SAFE USE OF THIS ATTACHMENT AND HOST MACHINE IN A CLEAR AREA BEFORE YOU OPERATE THIS MACHINE ON A JOB SITE.**
- 5. IT IS YOUR RESPONSIBILITY TO OBSERVE PERTINENT LAWS AND REGULATIONS IN RESPECT OF THE OPERATION OF THIS ATTACHMENT AND THE HOST MACHINE.**

TO THE OWNER

You are the owner of an attachment that has been built to operate correctly on your host machine.

The attachment conforms to current safety regulations (see OFFICIAL JUSTIFYING DOCUMENTS on the following page).

However, this does not exclude all risk of accidents, which is why it is essential to observe elementary safety rules and precautions.

Before putting this attachment into service please ensure that:-

1. The operator has read and fully understands this operator's manual.
2. The operator has received necessary training on the functions and capabilities of this attachment.
3. The information on the identification plate, which is fixed to the attachment, matches the information on the EC Declaration of Conformity.

OFFICIAL JUSTIFYING DOCUMENTS

EC DECLARATION OF CONFORMITY



WHITES

EC DECLARATION OF CONFORMITY

The manufacturer,
WHITES MATERIAL HANDLING LTD.,
10/12 DIXON ROAD,
BRISTOL, BS4 3HX
UNITED KINGDOM.

DECLARES THAT THE PRODUCT DESCRIBED BELOW

PRODUCT **MANURE FORK AND GRAPPLE**
PART NUMBER **788479WH**
WEIGHT **686** KG
SERIAL NUMBER **107747**

Conforms to the relevant health and safety requirements of the Directive 2006/42/EC
and that the following standards and technical specifications have been respected -
BS EN474-1:2006 + A1:20

Peter White, Managing Director of Whites Material Handling Ltd., authorises George Boulton,
creator of the Technical File in which the above product relates, to act as signatory to this
document.

Place - Bristol

Signature

Date - 11/12/2012

George Boulton
Whites Material Handling Ltd.,

-SAFETY (automatically certified as per 89/392/EEC.)

Attachment <input type="text"/>	Serial Number <input type="text"/>
Part Number <input type="text"/>	Date of Manufacture <input type="text"/>
S.W.L. <input type="text"/> Kg (pallet fork attachment)	Max Hyd Pressure <input type="text"/> Bar
MASS (WEIGHT) <input type="text"/> Kg	Capacity <input type="text"/> m ³
To fit Machine <input type="text"/>	Model <input type="text"/>
Manufacturer / Supplier WHITES MATERIAL HANDLING	CE
Bristol, BS4 5QW, U.K. Tel. 44+ (0) 117 972 0006 Fax. 44+ (0)117 972 3296	

ATTACHMENT IDENTIFICATION PLATE:- Part No. WH-CE-STD

LOADER MOUNTED ATTACHMENTS

- 1. SAFETY**
- 2. OPERATING INSTRUCTIONS**
- 3. MAINTENANCE**
- 4. SUPPLEMENTARY INSTRUCTIONS**

1. SAFETY

1.1 GENERAL: This attachment has been designed and built according to the state of the art and meets current safety regulations in force. However, this does not completely exclude the risk of accidents. It is therefore essential to follow basic safety rules and precautions.

The strict execution of the instructions provided in this manual will prevent accidents during attachment use and maintenance operations.

These instructions will only be effective if the attachment receives proper maintenance. Any defects or anomalies must be repaired immediately.

Only use this attachment for the purpose for which it was designed.

1.2 BEFORE YOU OPERATE THE ATTACHMENT: Please be aware that this attachment is designed to be used in conjunction with the host machine. It is essential, therefore, to be fully conversant with the correct operating procedures and safety instructions of the machine. Familiarise yourself with the attachment, and the loads to be carried.

Always follow the machine manufacturers' instructions in relation to connection, disconnection and operation of attachments.

1.3 MAINTENANCE:

! BEFORE CARRYING OUT ANY SERVICE WORK ON THE ATTACHMENT:

- ***Park the host machine on a hard level surface.***
- ***Lower the attachment to the ground.***
- ***Apply the parking brake and shut down the engine.***
- ***Block the machine to prevent any movement.***

When servicing the attachment, place a 'DO NOT START UP' label on the control panel of the machine.

Modifying the attachment without prior permission can cause serious injury. Do not undertake any modification without prior authorisation from White's or their Approved Agent.

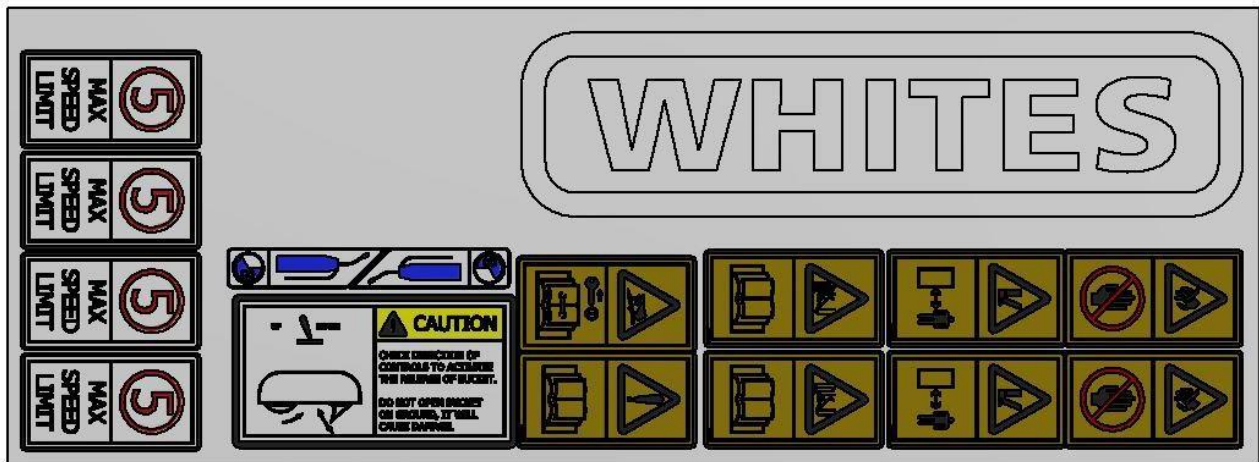
Always wear eye protection when using a tool that may project metal particles. Use a hammer with a soft face, such as copper, for installing pins.

Pressurised hydraulic fluid or grease, which penetrates the skin can cause serious injury. Take the necessary safety precautions (safety clothing and protection for the face and hands) to avoid such risks. Also, before using these products, read the manufacturer's instructions for their use. If hydraulic fluid penetrates the skin, call a doctor immediately.

1.4 FAILURE DURING OPERATION: If an attachment failure occurs during operation, disconnect the attachment from the host machine and take measures against its' use until a satisfactory repair has been carried out.

1.5 SAFETY DECALS:

**! An illegible or missing decal may have serious consequences.
Replace safety decals that are missing or damaged.**



2. OPERATING INSTRUCTIONS

2.1. INSPECTION:

UPON DELIVERY:- Check for transit damage.
Check hydraulic system for any damage or leaks.

DAILY INSPECTIONS:- Check for weld and/or structural failure.
Check for insecure bolts, nuts and pins.
Check for missing parts.
Check for hydraulic leaks.
Check for bristle wear.
Check for wheel rotation and swivel.

MONTHLY INSPECTIONS:- Check for excessive wear on all contact parts. Replace with genuine spares when necessary.

2.2 APPLICATION: For all earth moving, and load handling operations refer to the machine manufacturer's handbook for correct use of machine and its' controls.

Ensure that the attachment is suitable for the work in hand. e.g. check that the capacity of the attachment is matched to the density of the load.

Always carry the load low!

2.3. SITE FAMILIARITY: Before operating the machine and attachment on a new site, check and locate any holes, obstacles, and debris that could be in the machine area, Locate any unavoidable 'danger areas' (electric power lines, bridges, tight corners, etc.) and make sure you can work safely in these areas. Electric power lines, gas pipes, water pipes or other underground installations can cause injury or death. Find out about the location of underground installations before you operate the attachment in a new area. Be aware of people in the vicinity of the attachment. Send away those whose presence is not required.

2.4. NORMAL USE:

! Hillside operation can be dangerous. Rain, snow, loose gravel or soft ground change working conditions. Before you work on a hillside, make sure the attachment can be operated safely.

This attachment is designed to operate with the host machine under normal working conditions. Care should be taken if weather or site conditions become difficult. Operate the attachment carefully and smoothly in poor weather and on uneven sites.

2.5. OTHER USES: This attachment is designed for a specific application. Do not carry out different applications with this attachment before first checking with Whites or their Agent.

2.6. HANDLING AND TRANSPORTATION: Buckets and attachments can become unstable when not connected to their host machine. Great care should be taken when handling or transporting buckets and attachments. Personnel should be made aware of the risk of injury if due care is not taken. When transporting, always ensure that the attachments are securely strapped or roped to the carrying vehicle.

3. MAINTENANCE

! Never attempt to service a hydraulic circuit component without having first made sure it is no longer under pressure. To do this, carefully read the following instructions.

3.1. GENERAL INSTRUCTIONS: Attachments which operate with hydraulic power are supplied through the auxiliary hydraulic system of the host machine.

Connection to the auxiliary hydraulic circuit is by means of quick release couplers.

To connect or disconnect the quick couplers the operator must relieve the hydraulic pressure in the host machine. To relieve pressure, please see machine manufacturer's instruction manual.

Regularly check the attachment for signs of damage or wear. Repair or replace damaged components immediately.

If welding repairs are necessary, please observe the following points:-

1. Remove attachment from host machine.
2. Always employ a competent and fully qualified welder to carry out the repair.

When ordering replacement parts always quote the part number and attachment serial number.

3.2. LUBRICATION: DAILY OR EVERY 8 HOURS OPERATION:- Grease all moving parts with Molydisulphide Grease, including, but not limited to hinge points, hydraulic cylinder swivel points, wheels and bearings.

GROUND ENGAGING COMPONENTS: Excessive wear to bucket cutting edges & base, will lead to reduced performance. Check wear to rubber wear/sweeping blade and the wrap around rubber skirting, replace where necessary.

4. SUPPLEMENTARY INSTRUCTIONS FOR THE OPERATION OF SPECIFIC ATTACHMENTS

SAFETY

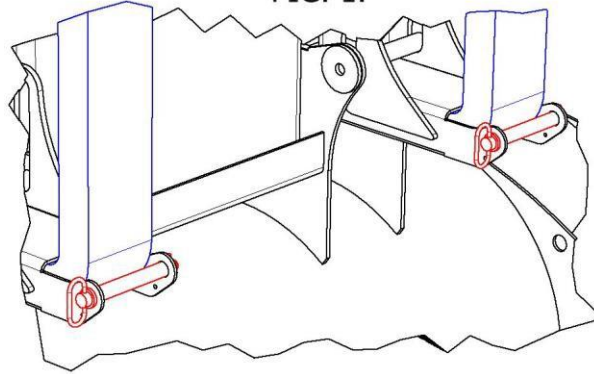
- 1) It is essential that before operating this attachment the operator is fully capable of safely operating the host machine.
- 2) The operator should ensure that no other persons are present in the working area.

- 3) Do not exceed 5mph, Avoid pot holes. Avoid man hole covers. Avoid curbs.
- 4) Do NOT travel in reverse with the SWEEPER COLLECTOR whilst on the ground, raise free from the ground first.
- 5) The operator should ensure that the attachment is the correct unit for the host machine by checking the attachment identification plate which is attached to the rear of the attachment.

CONNECTING SWEEPER TO HOST MACHINE.

- 1) Remove both fork heel pins and stow securely.
- 2) Insert both forks into both fork pockets.
- 3) Insert both heel pins into fork securing holes behind fork heels. (FIG 1)
- 4) Do NOT attempt to move the SWEEPER COLLECTOR without both heel pins fitted.
- 5) Connect auxiliary hydraulics.

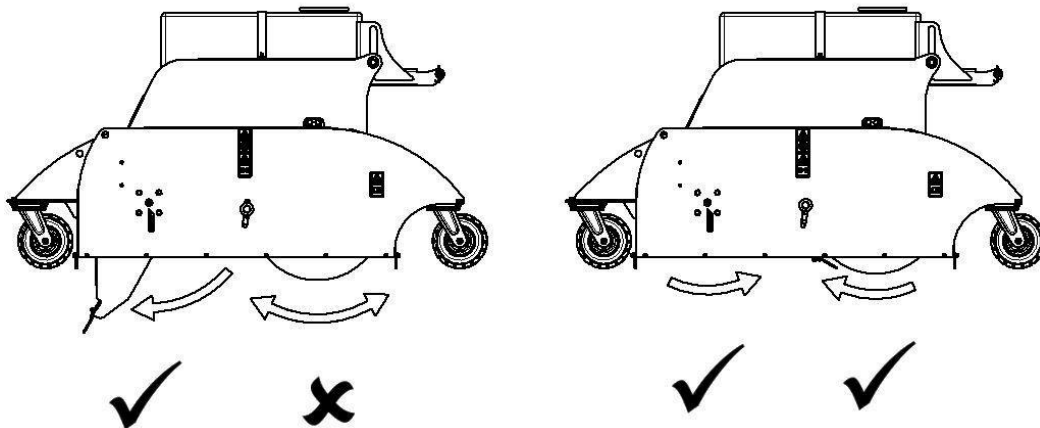
FIG. 1.



OPERATION

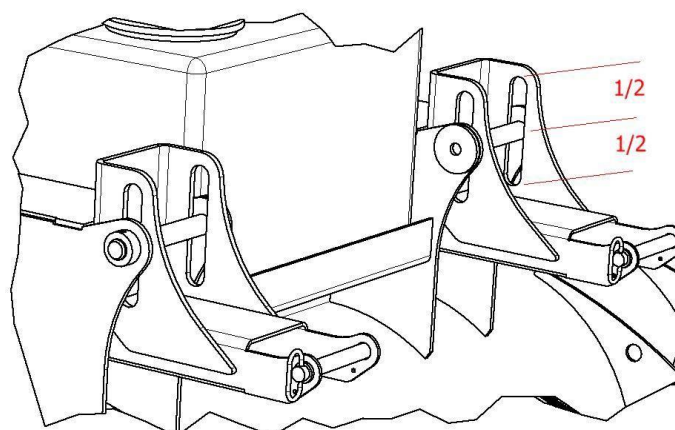
- 1) Raise the SWEEPER COLLECTOR from the ground, until bristles and collector bucket are free from ground.
- 2) Use auxiliary hydraulic service to test the operational direction of the controls. One way will operate the sweeping bristles and close the collector bucket. One way will open the collector bucket. (FIG 2.)

FIG. 2.

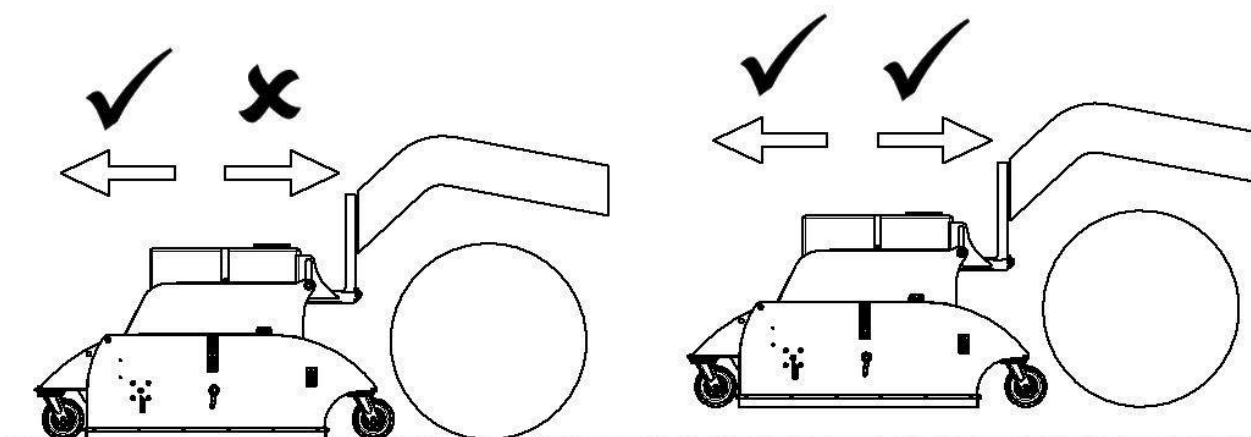


- 3) Ensure collector bucket is fully retracted inside the canopy and only then lower until wheels are on the floor.
- 4) Set the height of the forks, so that they are in the middle of the fork pockets. (FIG 3.)

FIG. 3.



- 5) Operate the auxiliary hydraulic circuit to start the rotation of sweeping bristles, and drive forwards along the path to be cleaned. Do NOT exceed 5mph.
- 6) To empty collector bucket, raise the SWEEPER COLLECTOR above the waste dump and activate the auxiliary hydraulic control which will dump and empty the collector bucket. Then close the collector bucket.
- 7) Do NOT travel in reverse with the SWEEPER COLLECTOR whilst on the ground, raise free from the ground first.



MAINTAINANCE

DAILY OR EVERY 8 HOURS OPERATION

Check for damage and wear.

Replace damaged or worn components immediately to ensure safe and efficient operations of this attachment.

Check for damage or leaking of hydraulic components, fittings and hoses.

CHANGING HEIGHT OF SWEEPING BRISTLE

1. Ensure Sweeper is on level ground with all wheels on the ground
2. Loosen bolt as indicated in FIG.4. BOTH SIDES, with supplied spanner FIG.5, to allow the bristle assembly to drop to the floor.
3. Tighten the bolt to fasten the bristle assembly into the sweeper
4. As the discs become worn, the bolt will need to be tightened in the slot lower to the ground, as FIG.6.

FIG. 4.

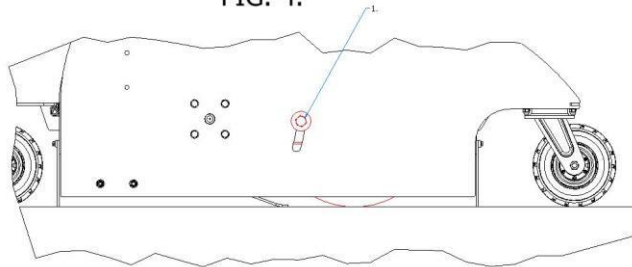


FIG. 5.

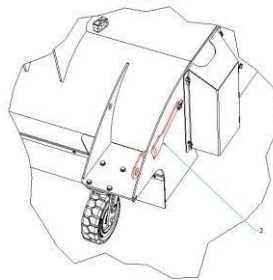
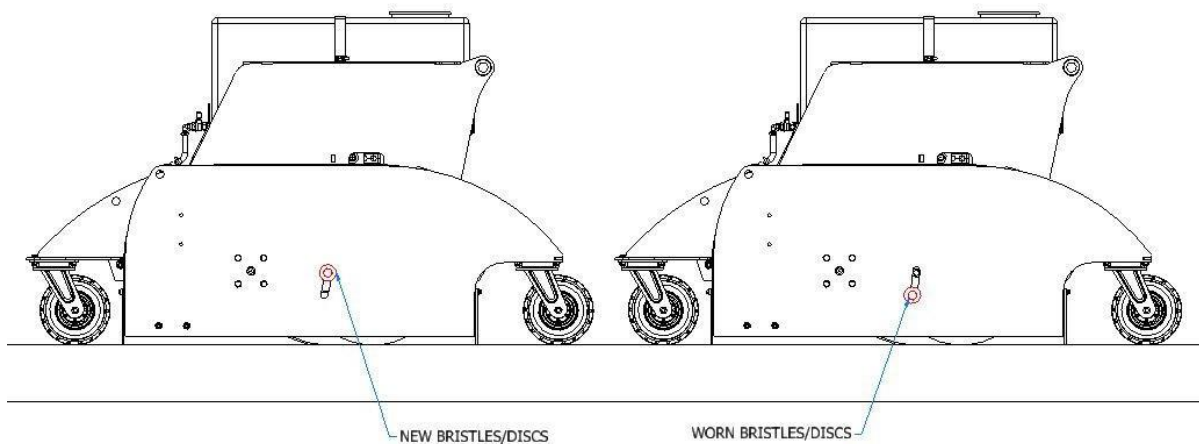
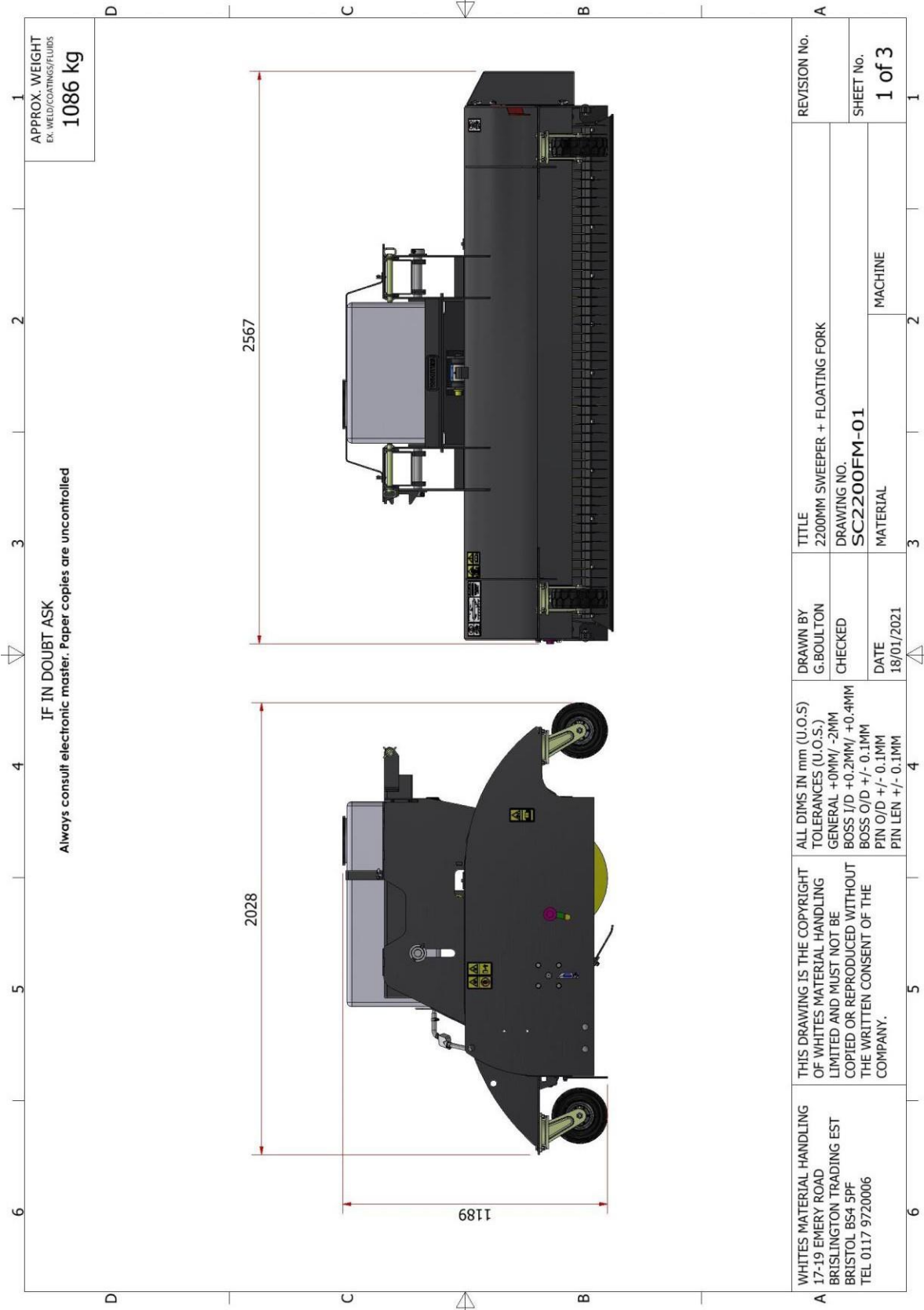
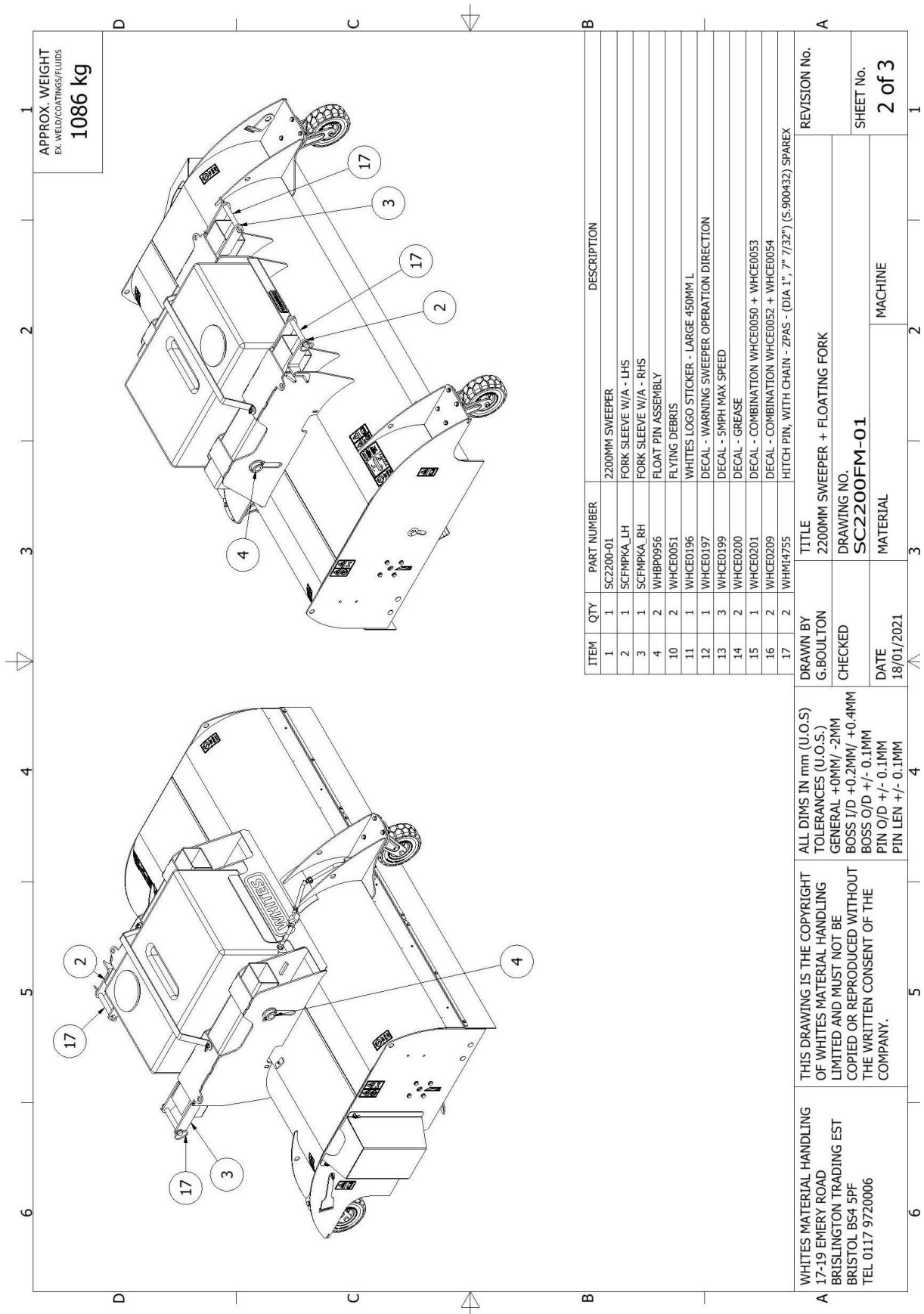


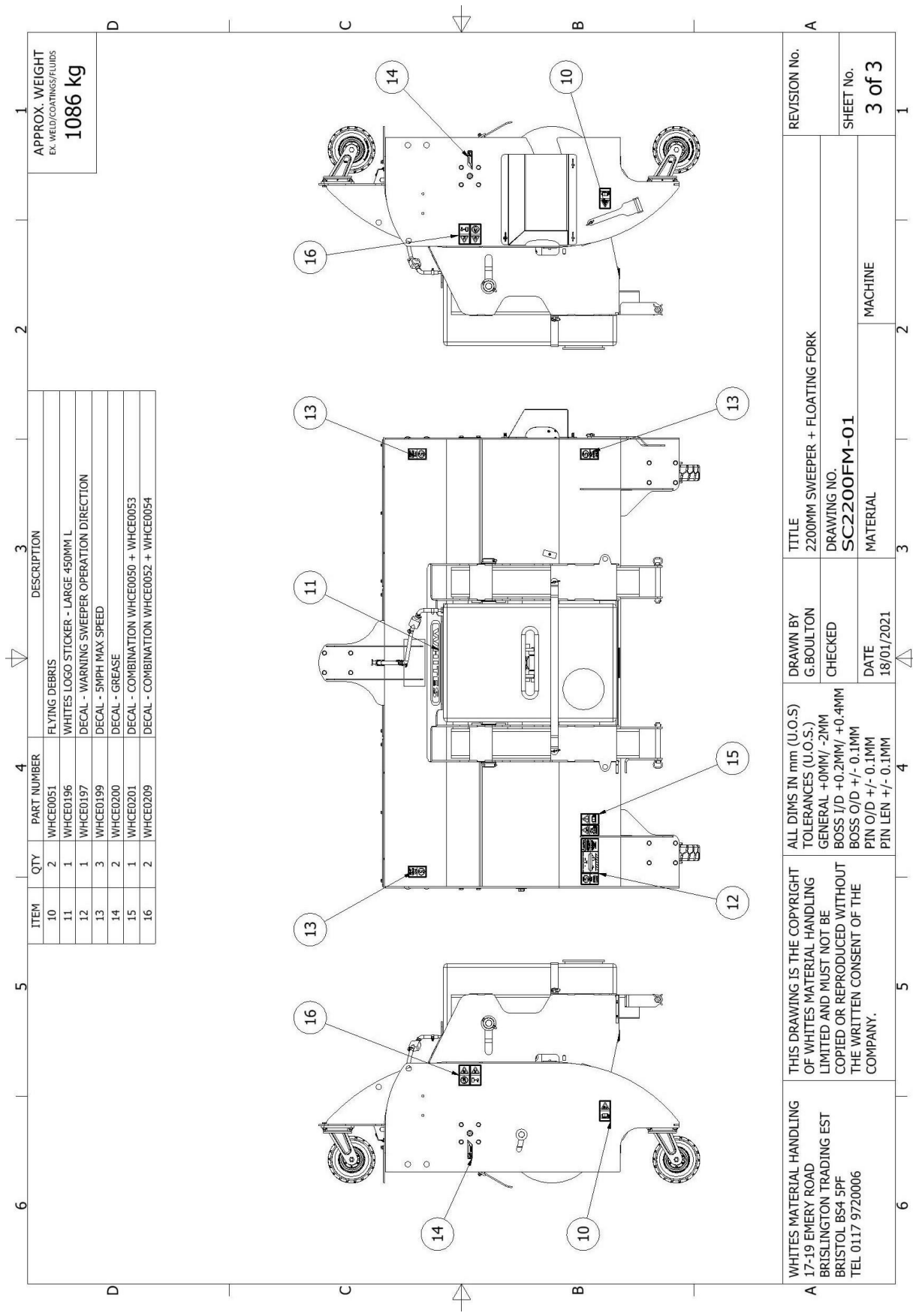
FIG. 6.

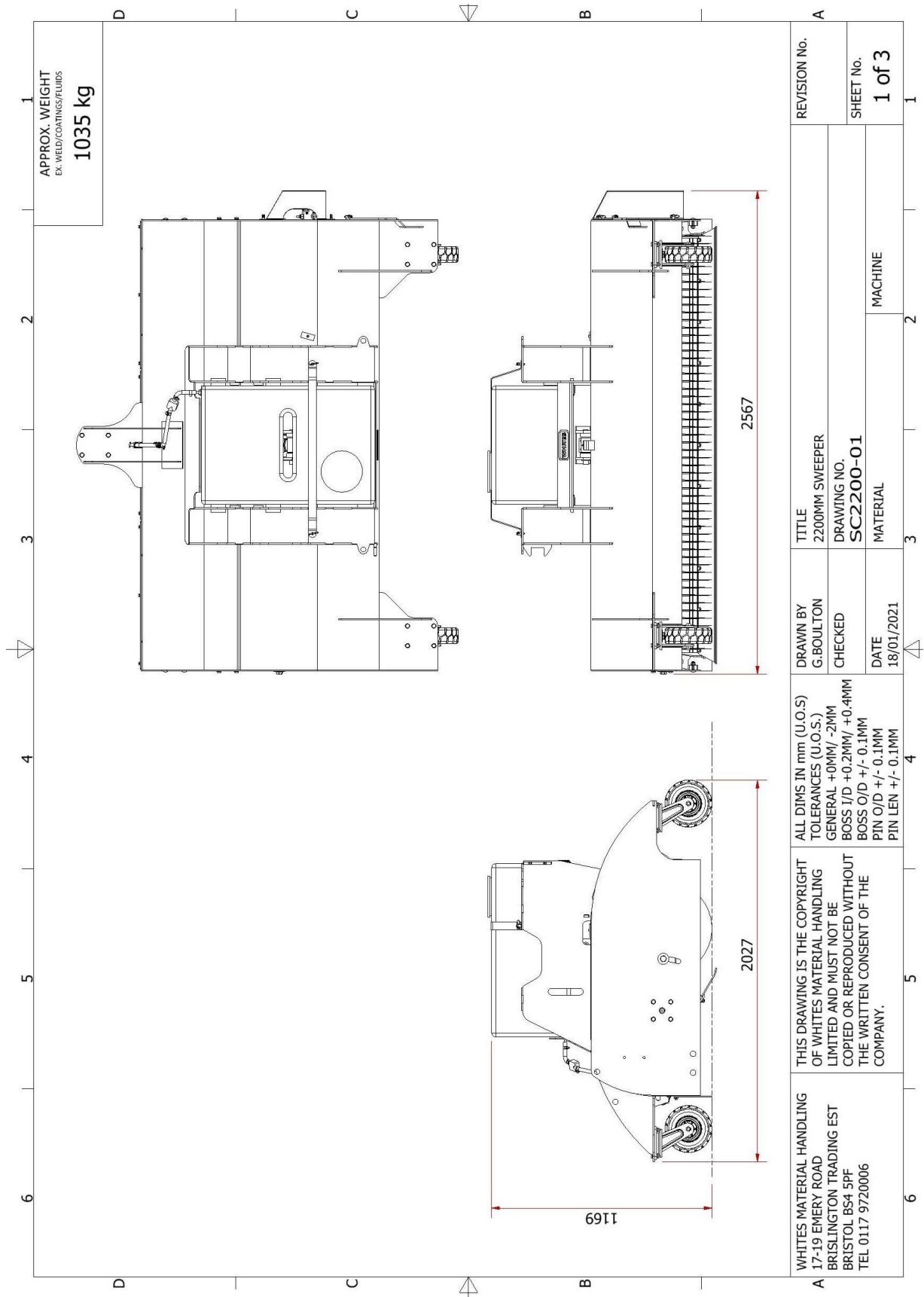


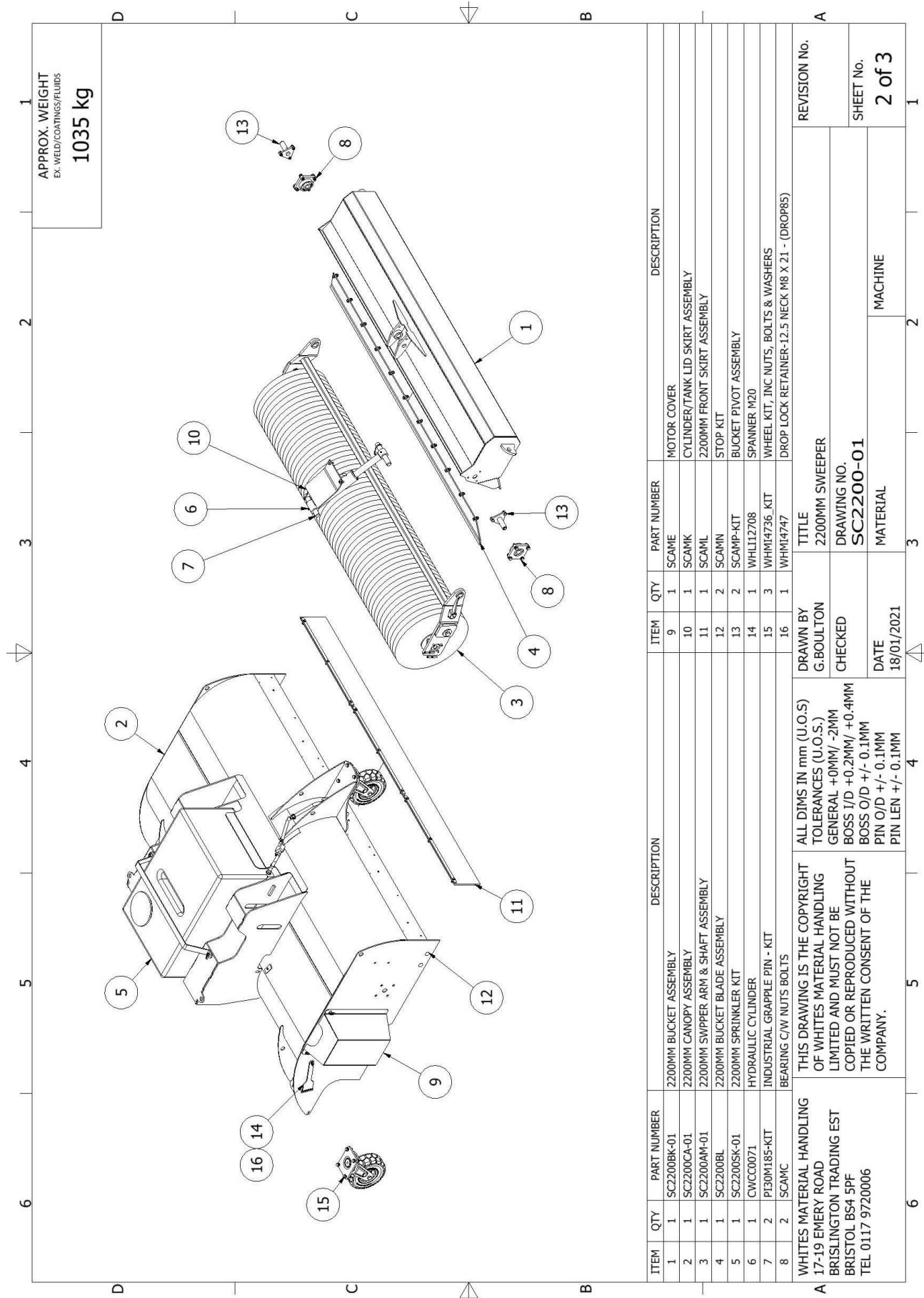
PARTS LIST

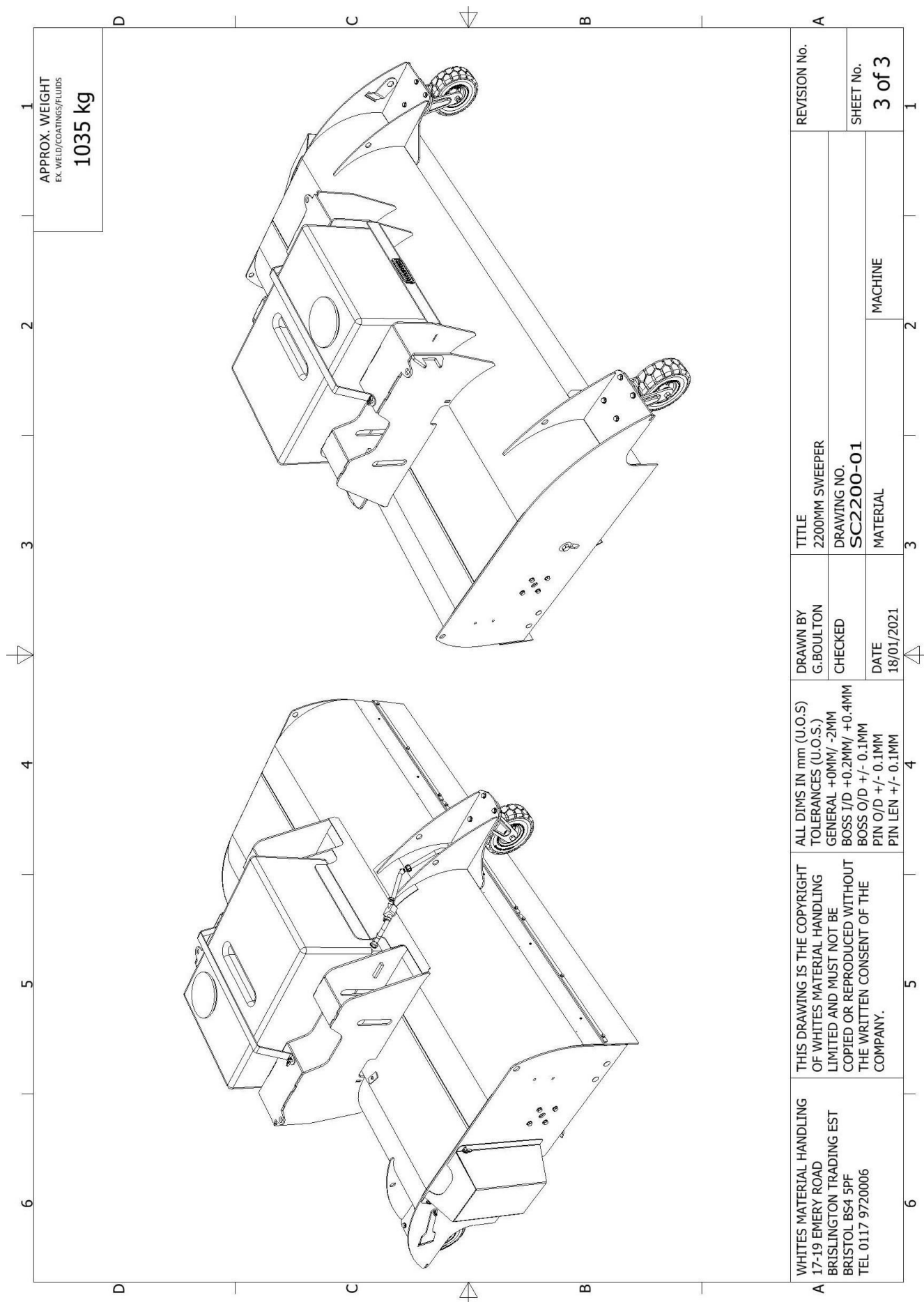


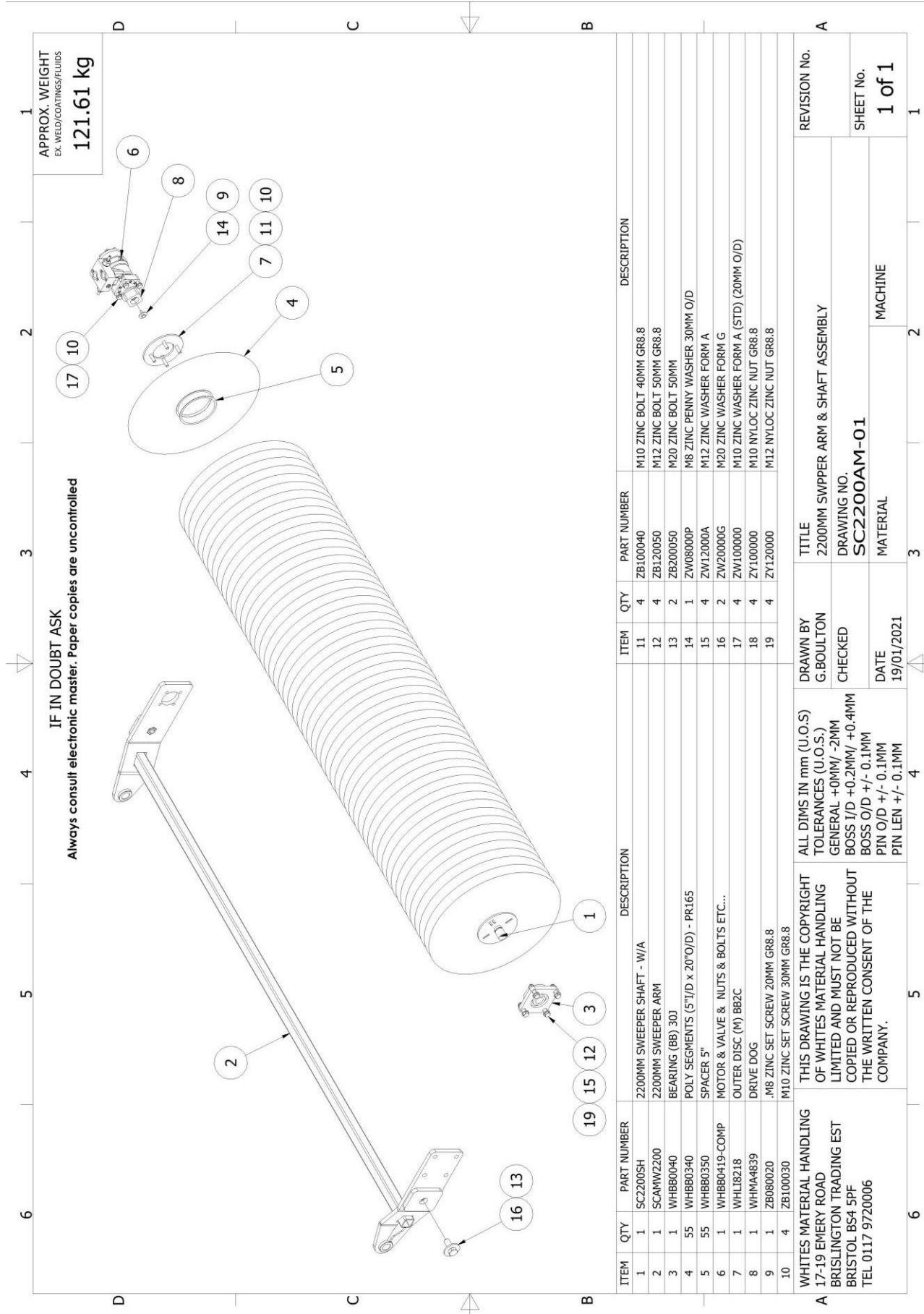


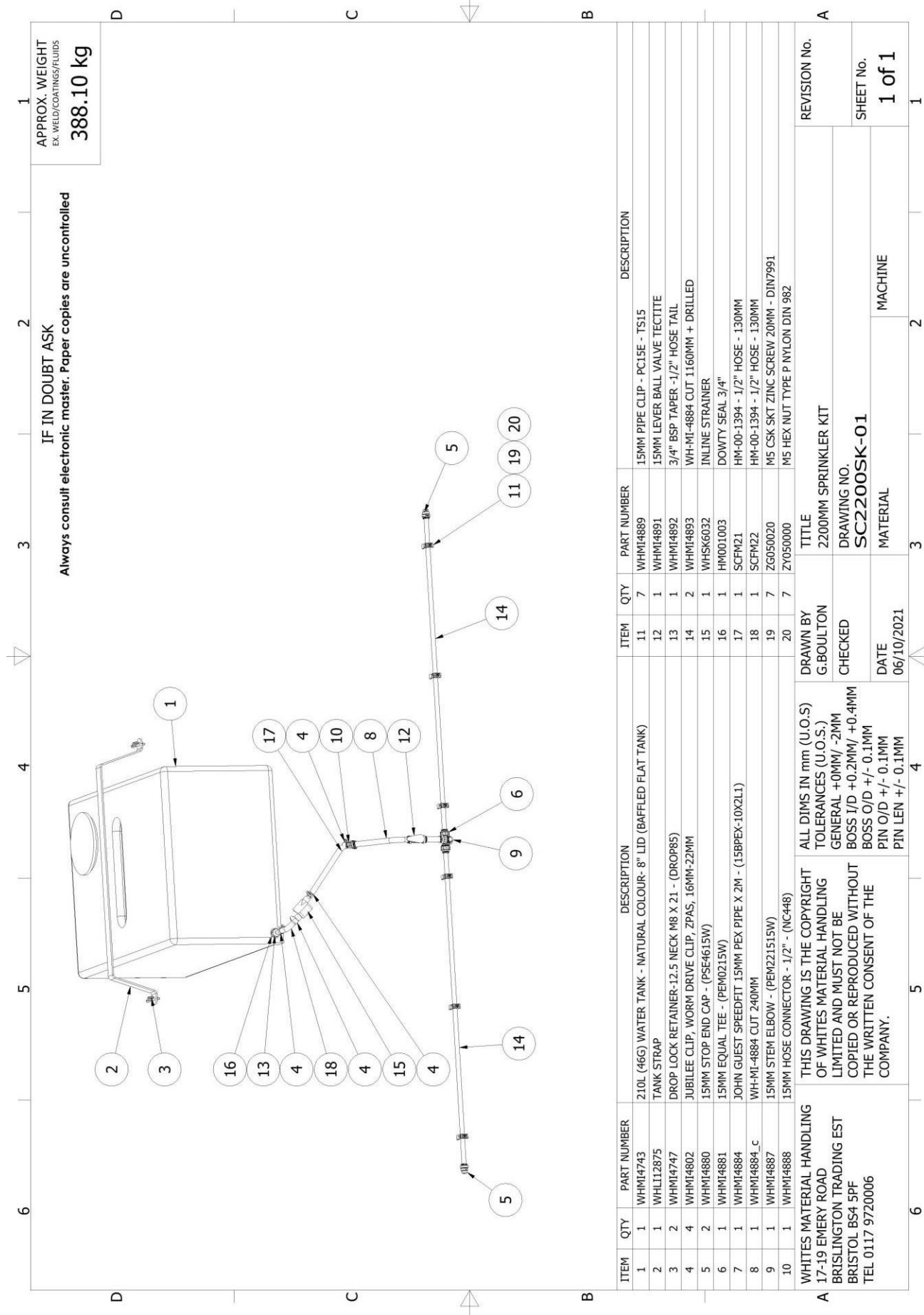










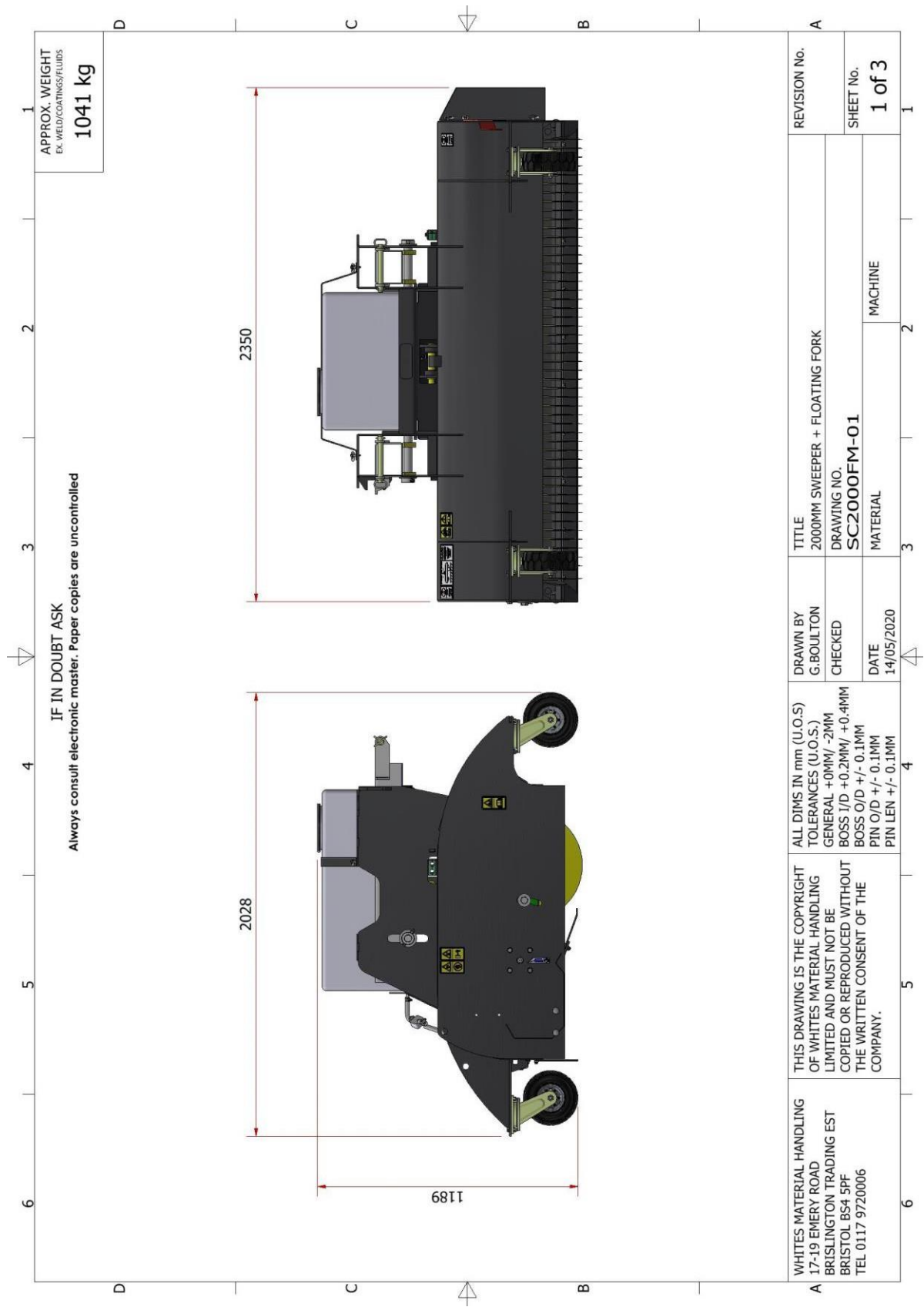


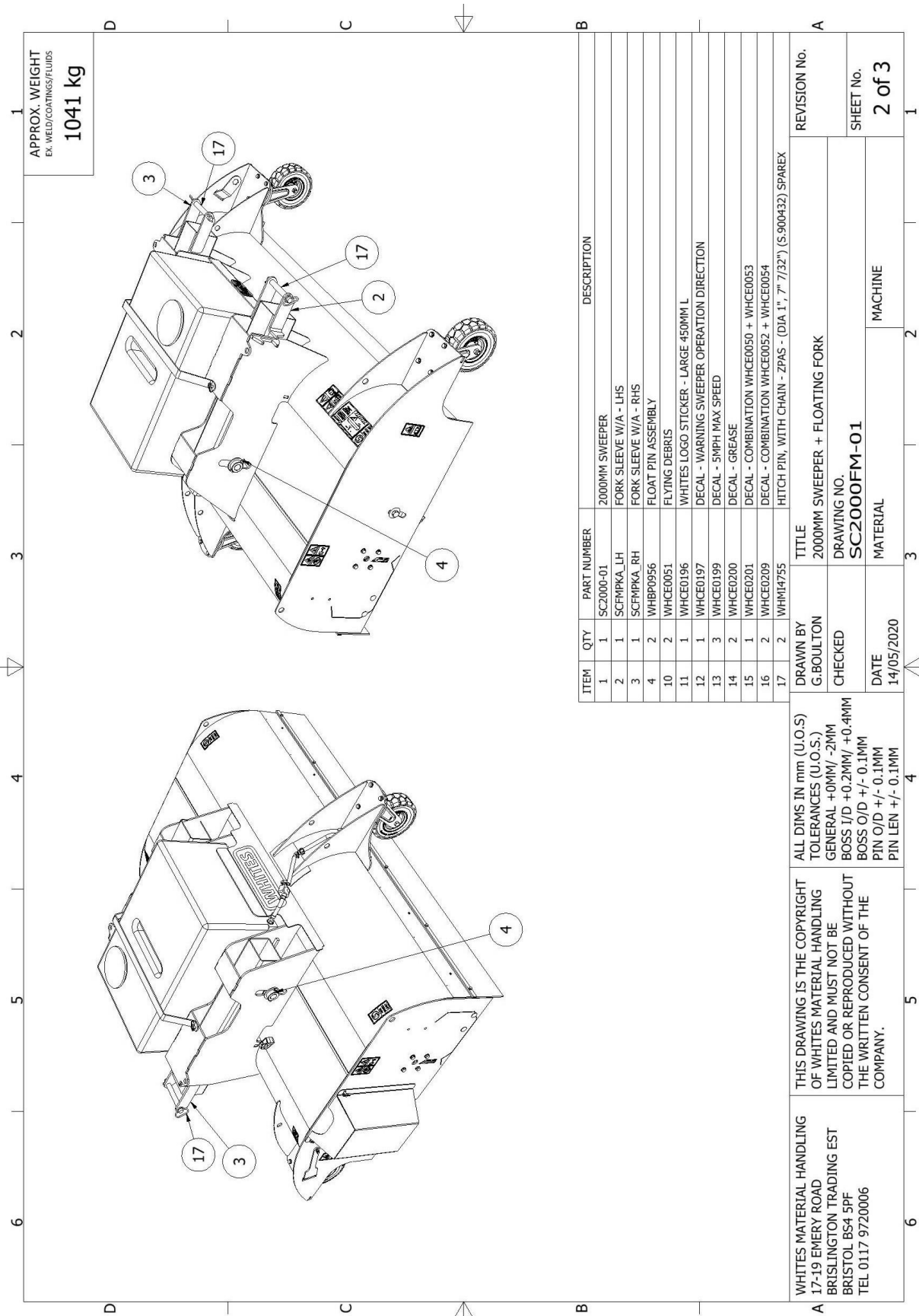
APPROX. WEIGHT
EX. WELD/COATINGS/FLUIDS
388.10 kg

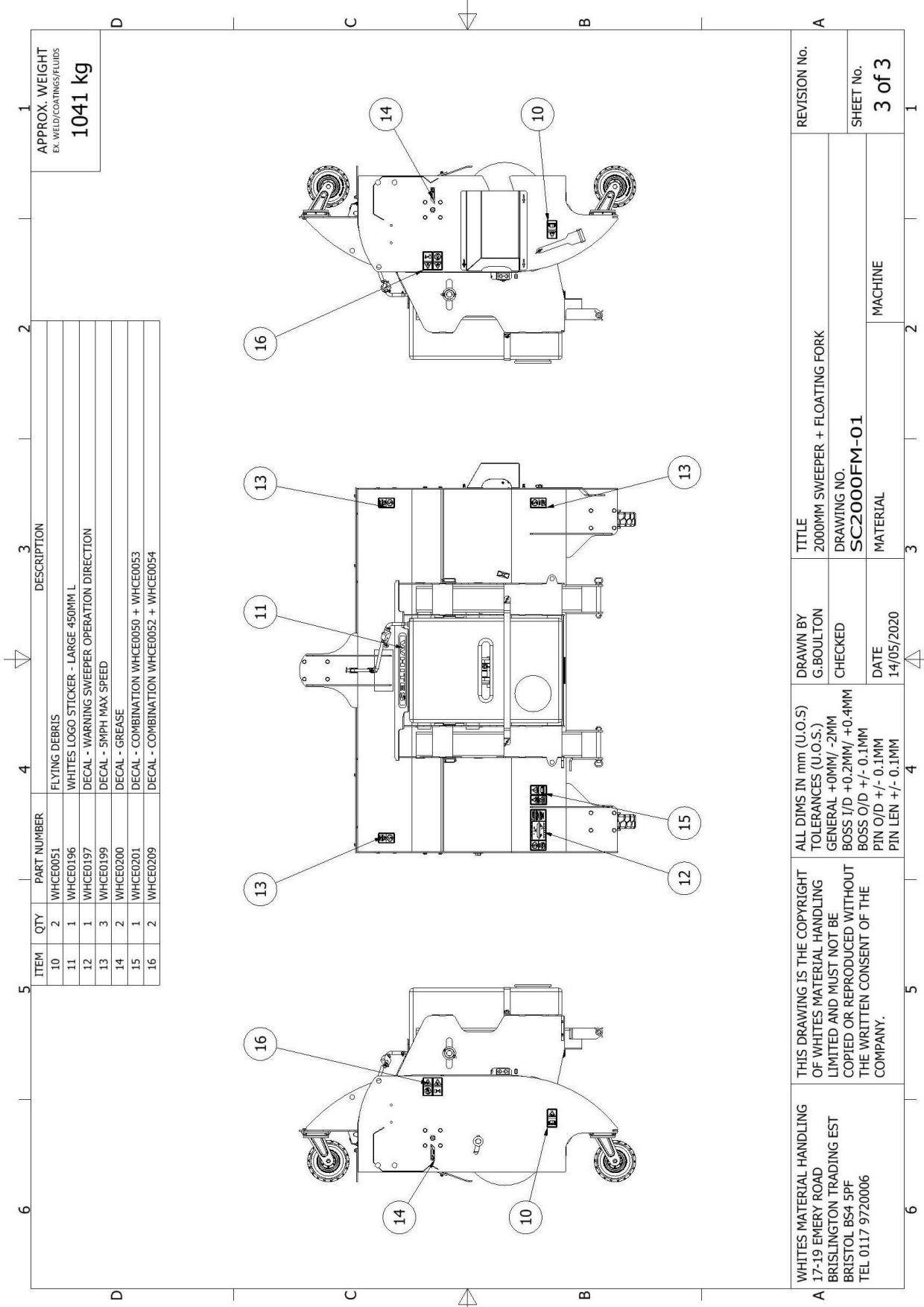
IF IN DOUBT ASK
Always consult electronic master. Paper copies are uncontrolled

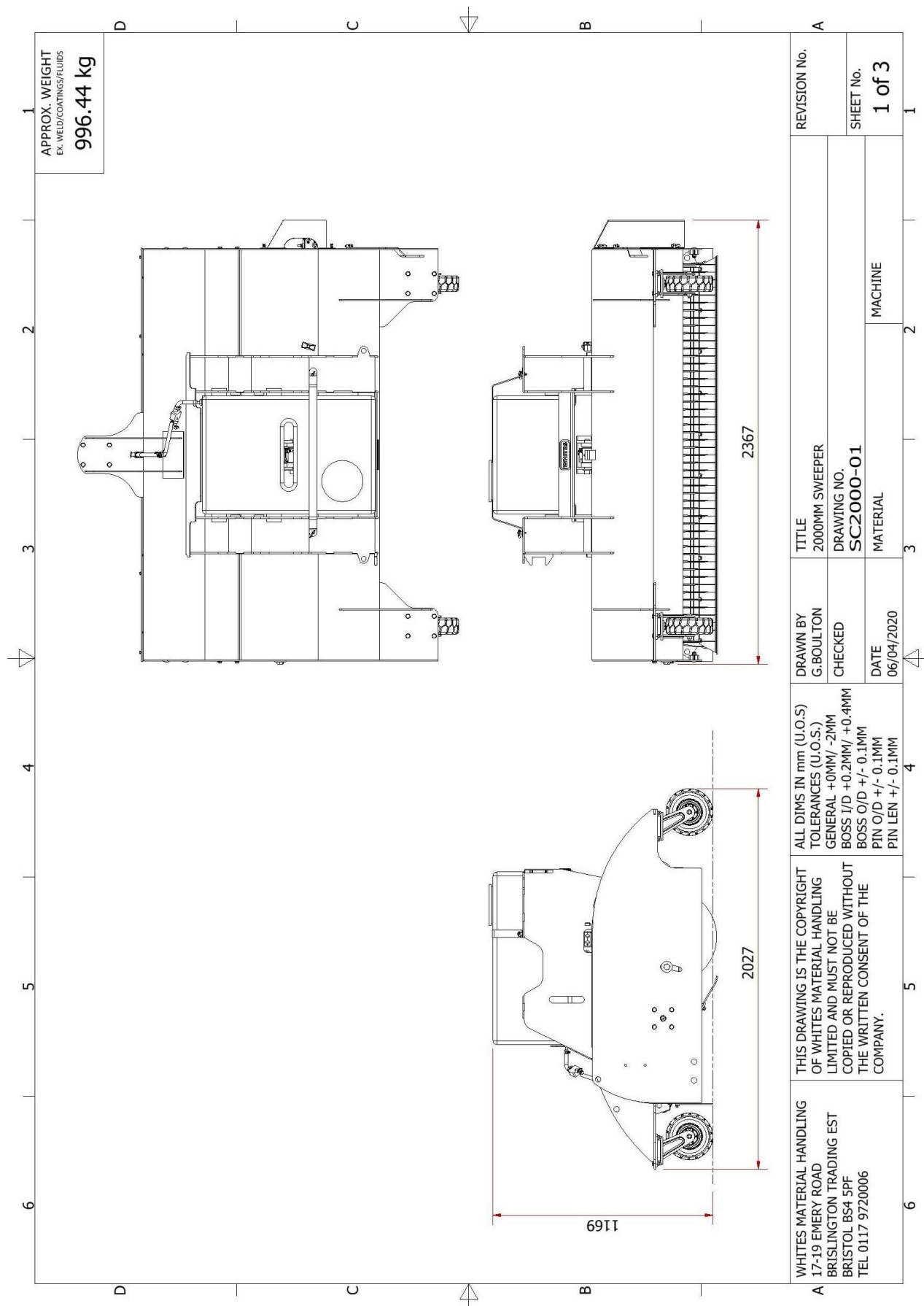
ITEM	QTY	PART NUMBER	DESCRIPTION	ITEM	QTY	PART NUMBER	DESCRIPTION
1	1	WHM14743	210L (46G) WATER TANK - NATURAL COLOUR- 8" LID (BAFFLED FLAT TANK)	11	7	WHM14889	15MM PIPE CLIP - PC15E - TS15
2	1	WHL112875	TANK STRAP	12	1	WHM14891	15MM LEVER BALL VALVE TECTITE
3	2	WHM14747	DROP LOCK RETAINER-12.5 NECK M8 X 21 - (DROP85)	13	1	WHM14892	3/4" BSP TAPER -1/2" HOSE TAIL
4	4	WHM14802	JUBILEE CLIP- WORM DRIVE CLIP, 2PAS, 16MM-22MM	14	2	WHM14893	WH-M1-4884 CUT 1160MM + DRILLED
5	2	WHM14880	15MM STOP END CAP - (PSE-4615W)	15	1	WHSK6032	INLINE STRAINER
6	1	WHM14881	15MM EQUAL TEE - (PEM0215W)	16	1	HM001003	DOWTY SEAL 3/4"
7	1	WHM14884	JOHN GUEST SPEEDFIT 15MM PEX PIPE X 2M - (15BPEX-10X2L1)	17	1	SCFM21	HM-00-1394 - 1/2" HOSE - 130MM
8	1	WHM14884_C	WH-M1-4884 CUT 240MM	18	1	SCFM22	HM-00-1394 - 1/2" HOSE - 130MM
9	1	WHM14887	15MM STEM ELBOW - (PEM221515W)	19	7	ZG050020	M5 CSK SKT ZINC SCREW 20MM - DIN7991
10	1	WHM14888	15MM HOSE CONNECTOR - 1/2" - (NC448)	20	7	ZY050000	M5 HEX NUT TYPE P NYLON DIN 982

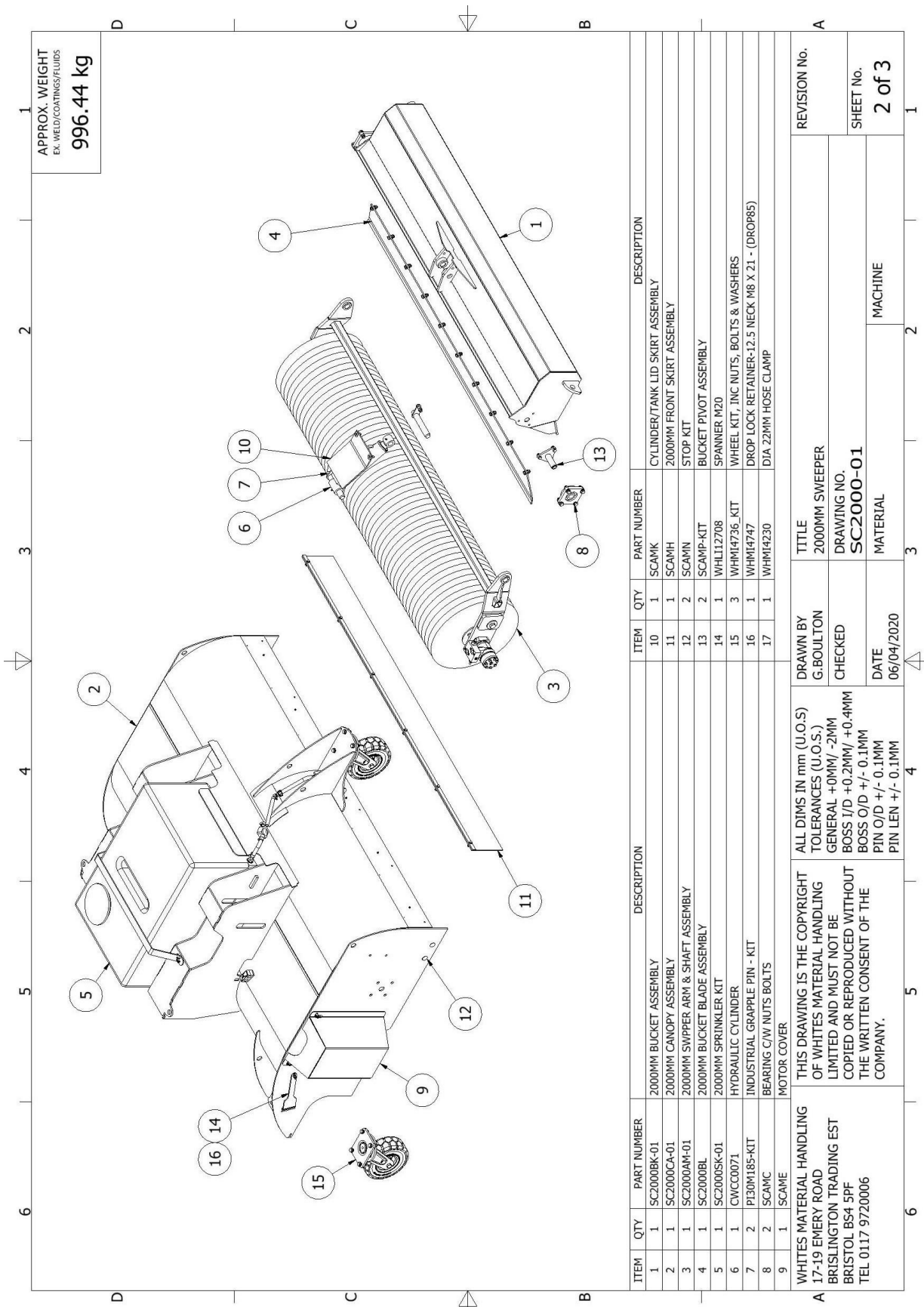
A	WHITES MATERIAL HANDLING 17-19 EMERY ROAD BRISTOLTON TRADING EST BRISTOL BS4 5PF TEL 0117 9720006		THIS DRAWING IS THE COPYRIGHT OF WHITES MATERIAL HANDLING LIMITED AND MUST NOT BE COPIED OR REPRODUCED WITHOUT THE WRITTEN CONSENT OF THE COMPANY.		ALL DIMS IN mm (U.O.S) TOLERANCES (U.O.S.) GENERAL +0MM/ -2MM BOSS I/D +0.2MM/ +0.4MM BOSS O/D +/- 0.1MM PIN O/D +/- 0.1MM PIN LEN +/- 0.1MM		DRAWN BY G.BOULTON		TITLE 2200MM SPRINKLER KIT		REVISION No.	
							CHECKED					
							DATE 06/10/2021		DRAWING NO. SC2200SK-01			
							MATERIAL		MACHINE		SHEET No. 1 of 1	



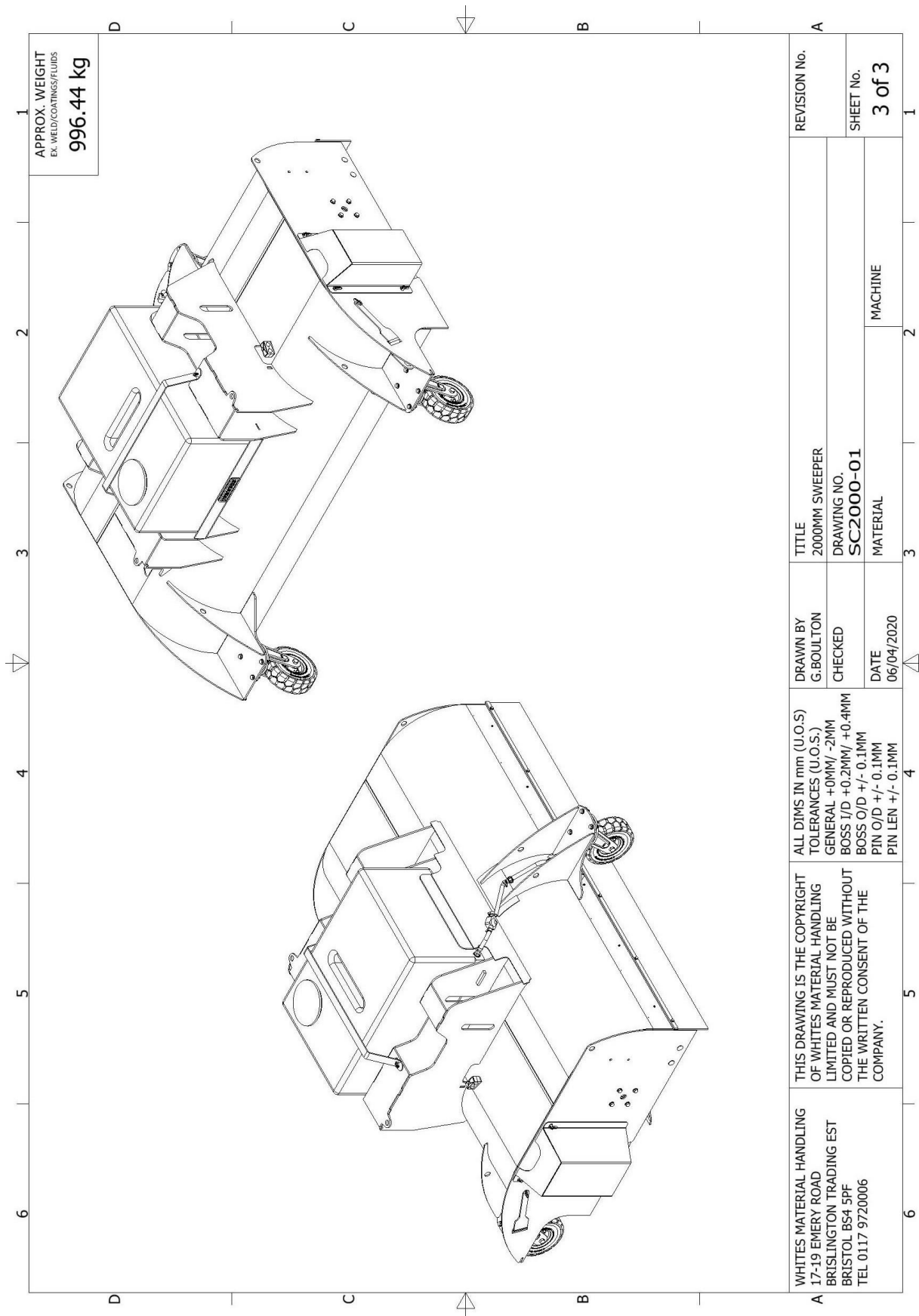




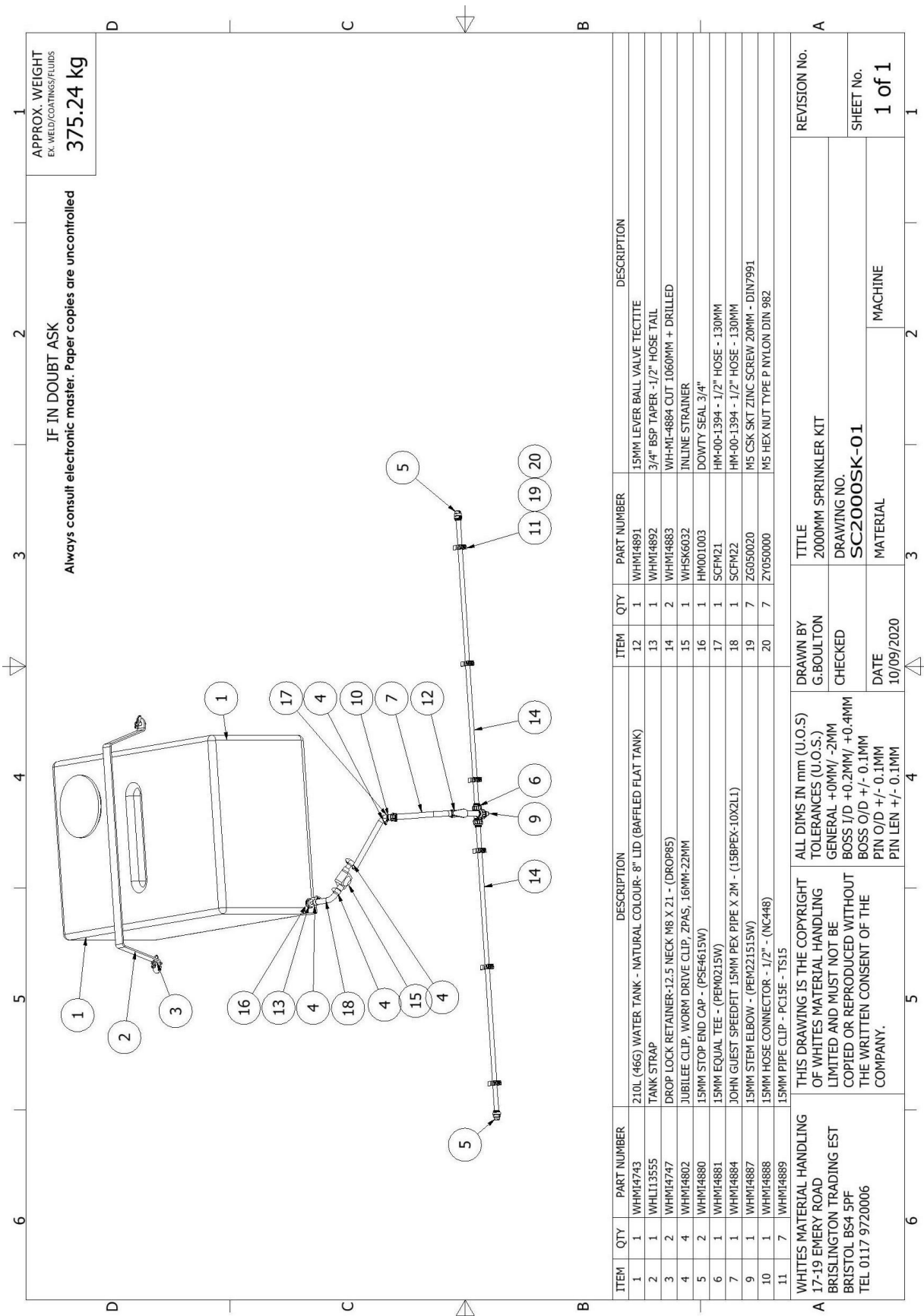




ITEM	QTY	PART NUMBER	DESCRIPTION	ITEM	QTY	PART NUMBER	DESCRIPTION				
1	1	SC2000BK-01	2000MM BUCKET ASSEMBLY	10	1	SCAMK	CYLINDER/TANK LID SKIRT ASSEMBLY				
2	1	SC2000CA-01	2000MM CANOPY ASSEMBLY	11	1	SCAVH	2000MM FRONT SKIRT ASSEMBLY				
3	1	SC2000AM-01	2000MM SWIPPER ARM & SHAFT ASSEMBLY	12	2	SCAMN	STOP KIT				
4	1	SC2000BL	2000MM BUCKET BLADE ASSEMBLY	13	2	SCAMP-KIT	BUCKET PIVOT ASSEMBLY				
5	1	SC2000SK-01	2000MM SPRINKLER KIT	14	1	WHL112708	SPANNER M20				
6	1	CWCC0071	HYDRAULIC CYLINDER	15	3	WHM14736_KIT	WHEEL KIT, INC NUTS, BOLTS & WASHERS				
7	2	PI30M185-KIT	INDUSTRIAL GRAPPLE PIN - KIT	16	1	WHM14747	DROP LOCK RETAINER-12.5 NECK M8 X 21 - (DROP85)				
8	2	SCAMC	BEARING C/W NUTS BOLTS	17	1	WHM14230	DIA 22MM HOSE CLAMP				
9	1	SCAME	MOTOR COVER								
WHITES MATERIAL HANDLING 17-19 EMERY ROAD BRISTOLINGTON TRADING EST BRISTOL B54 5PF TEL 0117 9720006			THIS DRAWING IS THE COPYRIGHT OF WHITES MATERIAL HANDLING LIMITED AND MUST NOT BE COPIED OR REPRODUCED WITHOUT THE WRITTEN CONSENT OF THE COMPANY.	ALL DIMS IN mm (U.O.S) TOLERANCES (U.O.S.) GENERAL +0MM/ -2MM BOSS I/D +0.2MM/ +0.4MM BOSS O/D +/- 0.1MM PIN O/D +/- 0.1MM PIN LEN +/- 0.1MM		DRAWN BY G.BOULTON CHECKED DATE 06/04/2020		TITLE 2000MM SWEEPER DRAWING NO. SC2000-01 MATERIAL MACHINE		REVISION No.	SHEET No. 2 of 3







ITEM	QTY	PART NUMBER	DESCRIPTION	ITEM	QTY	PART NUMBER	DESCRIPTION
1	1	WHM14743	210L (46G) WATER TANK - NATURAL COLOUR- 8" LID (BAFFLED FLAT TANK)	12	1	WHM14891	15MM LEVER BALL VALVE TECTITE
2	1	WHL13555	TANK STRAP	13	1	WHM14892	3/4" BSP TAPER -1/2" HOSE TAIL
3	2	WHM14747	DROP LOCK RETAINER-12.5 NECK M8 X 21 - (DROP85)	14	2	WHM14883	WH-MI-4884 CUT 1060MM + DRILLED
4	4	WHM14802	JUBILEE CLIP, WORM DRIVE CLIP, ZPAS, 16MM-22MM	15	1	WHSK6032	INLINE STRAINER
5	2	WHM14880	15MM STOP END CAP - (PSE4615W)	16	1	HM001003	DOWTY SEAL 3/4"
6	1	WHM14881	15MM EQUAL TEE - (PEM0215W)	17	1	SCFM21	HM-00-1394 - 1/2" HOSE - 130MM
7	1	WHM14884	JOHN GUEST SPEEDFIT 15MM PEX PIPE X 2M - (15BPEX-10X2L1)	18	1	SCFM22	HM-00-1394 - 1/2" HOSE - 130MM
9	1	WHM14887	15MM STEM ELBOW - (PEM221515W)	19	7	ZG050020	M5 CSK SKT ZINC SCREW 20MM - DIN7991
10	1	WHM14888	15MM HOSE CONNECTOR - 1/2" - (NC448)	20	7	ZY050000	M5 HEX NUT TYPE P NYLON DIN 982
11	7	WHM14889	15MM PIPE CLIP - PC15E - TS15				

WHITES MATERIAL HANDLING 17-19 EMERY ROAD BRISLINGTON TRADING EST BRISTOL B54 5PF TEL 0117 9720006	THIS DRAWING IS THE COPYRIGHT OF WHITES MATERIAL HANDLING LIMITED AND MUST NOT BE COPIED OR REPRODUCED WITHOUT THE WRITTEN CONSENT OF THE COMPANY.	ALL DIMS IN mm (U.O.S) TOLERANCES (U.O.S.) GENERAL +0MM/ -2MM BOSS I/D +0.2MM/ +0.4MM BOSS O/D +/- 0.1MM PIN O/D +/- 0.1MM PIN LEN +/- 0.1MM	DRAWN BY G. BOULTON	TITLE 2000MM SPRINKLER KIT	REVISION No.
			CHECKED	DRAWING NO. SC2000SK-01	
			DATE 10/09/2020	MATERIAL MACHINE	
SHEET No. 1 of 1					